

Performance Genetics

ANNUAL BULL & COMMERCIAL FEMALE SALE



DOLLARD FARMS

Saturday, February 25, 2012

12:30 p.m., Waukomis, Oklahoma

84 Angus Bulls

4 Hereford Bulls

Fall 2010 & Spring 2011 Yearlings

135 Commercial Females



Dear Cattlemen:

Welcome to the Thirteenth Annual Spring Bull and Commercial Female Sale. Our goal at Pollard Farms has always been to improve the quality of the bulls we present to you each year, and this year we feel confident we have done just that. Our 2012 offering is as select as ever, with a number of exciting young herd sire prospects by industry leading bulls such as *Bismarck*, *Hoover Dam*, *Credence*, *Upward*, *Final Answer* and *6EM3*.

These fine herd sire prospects are the most uniform, powerful and rugged of any set of bulls we have offered to date. Through our comprehensive embryo transfer and concentrated artificial insemination achievements, we have successfully acquired a strong set of genetics that will perform optimally in all facets of the industry. The genetics behind these bulls are full of consistence and endurance that will accomplish the goals you set in your operation.

Additionally, we have a choice group of mature registered females, both spring and fall calvers, as well as an outstanding set of young commercial females available for your consideration. These heifers come from powerful Angus genetics you have come to expect from us. They were bred to A.I. sires and cleaned up with *Bismarck* sons. All of these exceptional females will sell following the bulls on February 25th.

As always, you are welcome and encouraged to stop by the ranch at any time to visit and view the cattle and speak with us about your needs. Additionally, we invite you to our 15th Annual Fall Production Sale on Sunday, August 26th, 2012.

Once again, thank you to the crew for their tireless efforts throughout the year in working toward our common goal: to bring to you, our valued customer, the quality animals you desire and can achieve success with in your own programs.

If we can be of any assistance to you, please do not hesitate to give us a call.

Sincerely,

Barry
Barry Pollard

Jesse
Jesse Bias

DOLLARD FARMS L.L.C.
Barry & Roxanne Pollard, Waukomis, Oklahoma

Ranch (580) 758-1464 | Home (580) 758-3818 | Fax (580) 758-1481

Mailing Address: 102 South Van Buren, Enid, OK 73703

Jesse Bias, Cow Herd (580) 541-3361 | E-mail: kathyp@pollardfarms.com

Randy White & Dinah Johnston, Show Prospect Sales (580) 541-8280

www.pollardfarms.com

Lunch served at 11:30 a.m.

13th **ANNUAL BULL & COMMERCIAL FEMALE SALE**



Saturday, February 25, 2012

12:30 p.m., Waukomis, Oklahoma

At the ranch, one mile east of Highway 81 on Wood Road

See map, inside back cover.

FEATURING 88 HOME-RAISED SERVICE-AGE BULLS

84 Angus | 4 Hereford

All bulls A.I. sired, including many

E.T. full and half brothers from our top donor dams!

135 COMMERCIAL FEMALES

Motel Accommodations

Holiday Inn Express, 4702 W. Owen K. Garriott Road, Enid. (580) 237-7722.

Best Western Inn, 2818 South Van Buren, Enid. (580) 242-7110.

For assistance with reservations, call Kathy, (580) 758-1464.

Air Transportation

Oklahoma City's Will Rogers World Airport is served by most major airlines and is a 1-1/2 hour drive from Waukomis. Rental cars are available, or we will be happy to meet your flight with advance notice. For transportation assistance, please notify us in advance at (580) 758-1464.

Sale Day Phones

Sale Facility (580) 758-1464; Jesse Bias (580) 541-3361; Eddie Sims (580) 595-1626.

Association Representatives

Jarold Callahan, President, American Angus Assn.

John Pfeiffer, Director, American Angus Assn.

Jason Shepard, President, Oklahoma Angus Assn.

John and Gaye Pfeiffer, Oklahoma Angus *Challenger*

Scott Dewald, Executive Vice President, Oklahoma Cattlemen's Assn.

Sale Staff

Eddie C. Sims, Auctioneer — (580) 492-4590; Cell (580) 595-1626

Matt Sims, Auctioneer — (405) 641-6081

Matt Caldwell, *Angus Journal* — (913) 755-1105

Chisolm Kinder, *Oklahoma Cowman* — (405) 235-4391; cell 747-4683

Doug Paul, *The Stock Exchange* — (405) 820-3982

Robbie Schacher, Schacher Auction — (817) 219-0102

Ken Rockenbaugh, *High Plains Journal* — (580) 327-3050

Sale Manager



Internet Bidding



NATIONAL CATTLE SERVICES, INC.

P. O. Box 170 Elgin, Oklahoma 73538 580/492-4590 Fax 492-4594

Dear Angus Friends and Commercial Cattlemen:

Welcome to the 2012 Pollard Farms, LLC Annual Bull and Commercial Female Sale on Saturday, February 25th!

This year's sale will again include many full and half brothers from the extensive E.T. program at Pollard Farms. The donor dams of many of these bulls are among some of the breed's best producing Angus matrons. You will note the excellent EPD spreads on these bulls. The matings were selected upon extensive records to provide you with the best overall performance possible.

Selling will be sons of breed-leading sires such as Bismarck, Rito 6EM3, Upward, Bextor, Traveler 004, CC&7, Credence and many others. You will see outstanding quality throughout the fall and spring groups of prospects. Jesse has done a superb job of developing these bulls on a high maintenance ration, giving them large pasture traps for plenty of exercise and keeping them very sound on their feet and legs.

The commercial females are an excellent set of two year olds. The calves at their sides will be the market-topping kind. Also included are a set of really nice mature cows. These cows are A.I. bred and include spring and fall calvers.

I will look forward to seeing you sale day. If you have any questions before sale time, please give me, Jesse or Barry a call.

Sincerely,



Eddie C. Sims

"Let Your Next Sale Be A National Sale"

Offering Free Delivery!

... on multiple bull purchases within 250 miles.

A \$25 discount will be applied to all bulls picked up sale day!

Calving ease! "CALVING EASE" BULLS

All bulls having a Birth Weight EPD at or below the Angus breed average of +1.8 for non-parent bulls and an actual birth weight of 80 pounds or less are noted in the catalog for "Calving ease."

These bulls should be low risk for calving difficulty.

Bulls ranking in the upper 15% of non-parent Angus bulls for individual EPD traits and \$Values are noted in the footnote information. EPDs reported were current as of 1/30/12 but are continually updated.

Any sale bulls that are potential carriers of known Angus genetic defects have been tested. Results not available at catalog press time will be available by sale day.

Catalog and advertising prepared by
National Cattle Services, Inc., (580) 492-4590

Produced by Southwest TypeStyles, (405) 381-3591

Photography by Matt Sims, (405) 641-6081

Sale Terms and Conditions

Bulls will be sold according to the terms of the American Angus Association (Lots 1-84) or the American Hereford Association (Lots 85-88). All cattle are to be paid for during or immediately after the sale and will not be released until after settlement has been made. Bulls will not be transferred until paid for in full.

Herd Health

Pollard Farms is a Certified Brucellosis-Free herd, and all cattle are tested BVD free. All cattle will have interstate health charts required for shipping into other sections of the United States. Bulls have been fertility tested. All cattle have received 8-way, IBR, BVD, PI3, BRSV and Lepto vaccinations and are treated twice annually for internal and external parasites.

Breeding Guarantee

Pollard Farms guarantees that all breeding cattle sold, both males and females, are fertile to the best of our knowledge. In the event that a bull sustains an injury that deems him reproductively unable to service females within the first six months following the sale date, Pollard Farms will provide a suitable replacement or issue you credit, minus the salvage value of the bull, toward the purchase of a replacement from us in our next sale. Pollard Farms must be notified and agree to the culling or selling of the animal prior to its sale and may require a veterinarian examination of the animal to qualify for credit.

This is not a life insurance policy. Pollard Farms will not replace an animal if it dies, is killed or suffers an injury that is out of our control for any reason. We recommend that adequate care be exercised so the cattle do not get in poor condition. If you have any questions regarding health programs or nutrition, please feel free to contact us or your local veterinarian.

Registration Certificates

Registered bulls will be transferred to the buyer at the seller's expense. Each buyer must be sure to give the clerk the proper name and address for making transfers. A transferred certificate of registration will be mailed to the new owner at a later date.

Absentee Bids

If you would like to place a bid on any lot but will not be able to attend the sale, please contact the owners, the sale manager or any member of the sale staff, listed on page 1. Internet bidding for registered bidders will be available through LiveAuctions.tv. See page 31 for instructions.

Delivery

We are offering free delivery of bulls on multiple purchases within 250 miles to a centralized location. Delivery will begin following the sale. Livestock haulers will also be available for hire sale day. Bring your trailer and you will receive a \$25 discount on bulls picked up sale day.

Insurance

Insurance for your purchases will be available at the clerk's desk through Great American Assurance Company.

All announcements made sale day from the auction block will take precedence over statements in the sale catalog. We reserve the right to withdraw any sale lot not meeting our specifications prior to sale time. All persons who attend the sale do so at their own risk. Neither Pollard Farms nor the sale manager assumes liability, legal or otherwise, for accidents or loss of property. As the sale manager, National Cattle Services is only an agent for the seller and has no responsibilities other than those involved in conducting the sale.

FALL YEARLING BULLS



FALL YEARLING ANGUS BULLS

Lots 1-33

1 PF 6EM3 M12 0528

CALVED: 9/1/10 | AAA: +16739856 | TATTOO: 0528

- #+OCC Emblazon 854E [CAF-M1F]
- #DHD Traveler 6807 [AMF-M1F-NHF]
- +Rito 6EM3 of 4L1 Emblazon** [AMF-CAF-XF]
- Dixie Erica of CH 1019
- +Rita 4L1 of 2536 208 [AMF-CAF-NHF]
- #Bon View New Design 208 [CAC-AMF-NHF]
- GAR Precision 2536 [AMC-NHF]
- #Hunts Calculator 2720 [AMF-CAF-XF]
- GDAR 711 Computer
- #Reich Bonnie M12** [AMF]
- RR 1148 Ida 720A
- Reich Bonnie K56
- #Leachman Saughatchee 3000C [AMF-CAF-XF]
- #TA Bonny G62

CED	EXPECTED PROGENY DIFFERENCES						\$ VALUES	
	BW	WW	YW	MILK	MARB	RE	\$W	\$B
I+10	I-0.1	I+53	I+96	I+21	+0.09	+0.56	+35.06	+29.28

BIRTH WT.: 74 | ADJ. WNG. WT.: 702 / ET | ADJ. YRLG. WT.: 1128 / ET

ADJ. %IMF 3.60 | ADJ. REA 14.6 / R 107

Top 10% CED, BW, \$W; 15% RE.

Full brothers sell as Lots 13, 15 and 17.

Calving ease!



Sitz Henrietta Pride 643T Seven sons sell

2 PF Bismarck 643T 0506

CALVED: 9/1/10 | AAA: +16739910 | TATTOO: 0506

- #+GAR Grid Maker [AMF-CAF-XF]
- #GDAR Traveler 044 [AMF-CAF-XF]
- +SAV Bismarck 5682**
- GAR Precision 2536 [AMC-NHF]
- SAV Abigale 0451
- #Schoenes Fix It 826 [AMF-CAF-XF]
- SAV Abigale 6062
- Connealy Onward [AMF-CAF-XF]
- #Connealy Lead On [AMF-CAF-XF]
- +Sitz Henrietta Pride 643T**
- Altune of Conanga 6104
- Sitz Henrietta Pride 81M
- #Sitz Value 7097 [AMF-CAF-XF]
- Sitz Henrietta Pride 1370

CED	EXPECTED PROGENY DIFFERENCES						\$ VALUES	
	BW	WW	YW	MILK	MARB	RE	\$W	\$B
I+8	I+1.7	I+62	I+108	I+27	+0.11	+0.69	+40.20	+59.65

BIRTH WT.: 73 | ADJ. WNG. WT.: 714 / ET | ADJ. YRLG. WT.: 1080 / ET

ADJ. %IMF 2.25 | ADJ. REA 13.0

Top 3% WW; 5% YW; 10% RE; 15% Milk, \$W.

Maternal brothers sell as Lots 44, 52, 53, 54, 60 and 61.

Calving ease!

FALL YEARLING BULLS

3 PF 5118 Emblazon 0511

CALVED: 9/1/10 | AAA: 16719977 | TATTOO: 0511

- #+Rito 112 of 2536 Rito 616 [AMF-CAF-XF]
- #Rito 616 of 4B20 6807 [AMF-CAF-XF]
- +EXAR Rito 5118 of Rito 112** [AMF-CAF-XF]
- GAR Precision 2536 [AMC-NHF]
- +GAR New Design 1200 [AMF-NHF]
- #B/R New Design 036 [AMF-CAF-XF]
- GAR Precision 2536 [AMC-NHF]
- Connealy Thunder [AMF-CAF-XF]
- Baldrige Kaboom K243 KCF [CAF]
- RCF Thunder of Emblazon 759**
- #Parka of Conanga 241 [CAC-AMF-NHF]
- TL Emblazon 6902
- #+OCC Emblazon 854E [CAF-M1F]
- T L New Design 2215

CED	EXPECTED PROGENY DIFFERENCES						\$ VALUES	
	BW	WW	YW	MILK	MARB	RE	\$W	\$B
+5	+2.4	+41	+90	+27	+0.53	+0.57	+19.66	+62.57

BIRTH WT.: 70 | ADJ. WNG. WT.: 582 | ADJ. YRLG. WT.: 1086

ADJ. %IMF 4.05 / R 109 | ADJ. REA 12.5 / R 105

Top 15% Milk and RE.

4 PF Upward 81373 0512

CALVED: 9/1/10 | AAA: 16739892 | TATTOO: 0512

- Connealy Onward [AMF-CAF-XF]
- #Connealy Lead On [AMF-CAF-XF]
- Sitz Upward 307R** [AMF-CAF-XF]
- Altune of Conanga 6104
- Sitz Henrietta Pride 81M
- #Sitz Value 7097 [AMF-CAF-XF]
- Sitz Henrietta Pride 1370
- +Rito 6EM3 of 4L1 Emblazon [AMF-CAF-XF]
- #+OCC Emblazon 854E [CAF-M1F]
- +EXAR Wendy 81373** [AMF-CAF-NHF]
- +Rita 4L1 of 2536 208 [AMF-CAF-NHF]
- +Broken Arrow Wendy 040
- #+GDAR SVF Russ 184B
- HR Wendy 618

CED	EXPECTED PROGENY DIFFERENCES						\$ VALUES	
	BW	WW	YW	MILK	MARB	RE	\$W	\$B
+6	+2.8	+71	+126	+32	+0.30	+0.71	+29.96	+72.82

BIRTH WT.: 72 | ADJ. WNG. WT.: 767 / R 120 | ADJ. YRLG. WT.: 1215 / R 113

ADJ. %IMF 3.36 | ADJ. REA 14.4 / R 121

Top 1% WW, YW; 3% Milk; 5% RE; 10% \$B.



Lot 5

5 PF Upward 7380 0521

CALVED: 9/1/10 | AAA: +16952943 | TATTOO: 0521

- Connealy Onward [AMF-CAF-XF]
- #Connealy Lead On [AMF-CAF-XF]
- Sitz Upward 307R** [AMF-CAF-XF]
- Altune of Conanga 6104
- Sitz Henrietta Pride 81M
- #Sitz Value 7097 [AMF-CAF-XF]
- Sitz Henrietta Pride 1370
- #SS Objective T510 0T26 [AMF-CAF-XF]
- #SS Traveler 6807 T510 [AMF-CAF-XF]
- BluQ EF Blackcap 7380** [NHF]
- SS Miss Rita R011 7R8 [AMF-NHF]
- +EF Blackcap 5230 [AMF-NHF]
- #BR Midland [AMF-CAF-XF]
- +VT 1407 New Design Z38 [AMF]

CED	EXPECTED PROGENY DIFFERENCES						\$ VALUES	
	BW	WW	YW	MILK	MARB	RE	\$W	\$B
I+8	I+2.4	I+64	I+121	I+33	+0.68	+0.77	+27.28	+80.42

BIRTH WT.: 70 | ADJ. WNG. WT.: 773 / ET | ADJ. YRLG. WT.: 1255 / ET

ADJ. %IMF 4.77 / R 129 | ADJ. REA 14.6 / R 107

Top 1% YW; 2% WW, Milk, \$B; 3% RE; 15% Marb.

FALL YEARLING BULLS

FALL YEARLING BULLS

6 lot | **PF 6EM3 U0410 0537**
 CALVED: **9/1/10** | AAA: **+16739797** | TATTOO: **0537**
 #OCC Emblazon 854E [CAF-M1F] #DHD Traveler 6807 [AMF-M1F-NHF]
+Rito 6EM3 of 4L1 Emblazon [AMF-CAF-XF] Dixie Erica of CH 1019
 +Rita 4L1 of 2536 208 [AMF-CAF-NHF] #Bon View New Design 208 [CAC-AMF-NHF]
 #SS Objective T510 OT26 [AMF-CAF-XF] GAR Precision 2536 [AMC-NHF]
+Prospect Hill Rita U0410 [AMF] #SS Traveler 6807 T510 [AMF-CAF-XF]
 +GAR New Design 1440 [AMF] SS Miss Rita R011 7R8 [AMF-NHF]
 #B/R New Design 036 [AMF-CAF-XF]
 +GAR EXT 614 [AMF]

EXPECTED PROGENY DIFFERENCES							\$ VALUES	
CED	BW	WW	YW	MILK	MARB	RE	\$W	\$B
					+0.33	+0.64		

BIRTH WT.: **68** | ADJ. WNG. WT.: **651** / ET | ADJ. YRLG. WT.: **1129** / ET
 ADJ. %IMF **3.58** | ADJ. REA **14.0** / R **103**
 Top 10% RE.
 Full brother sells as Lot 18.

7 lot | **PF Upward 5382 0541**
 CALVED: **9/1/10** | AAA: **+16739923** | TATTOO: **0541**
 Connealy Onward [AMF-CAF-XF] #Connealy Lead On [AMF-CAF-XF]
Sitz Upward 307R [AMF-CAF-XF] Altune of Conanga 6104
 Sitz Henrietta Pride 81M #Sitz Value 7097 [AMF-CAF-XF]
 Sitz Henrietta Pride 1370
 #+Rito 112 of 2536 Rito 616 [AMF-CAF-XF] #Rito 616 of 4B20 6807 [AMF-CAF-XF]
+SandPoint Rita 5382 [AMF] GAR Precision 2536 [AMC-NHF]
 GAR Prime Time 2409 [AMF-NHF] #Gardens Prime Time [AMF-CAF-XF]
 +GAR EXT 327 [AMF]

EXPECTED PROGENY DIFFERENCES							\$ VALUES	
CED	BW	WW	YW	MILK	MARB	RE	\$W	\$B
+8	+1.7	+63	+115	+36	+0.43	+0.20	+33.18	+68.66

BIRTH WT.: **82** | ADJ. WNG. WT.: **749** / ET | ADJ. YRLG. WT.: **1187** / ET
 ADJ. %IMF **3.60** | ADJ. REA **10.9**
 Top 1% YW, Milk; 3% WW; 10% \$W; 15% \$B.
 Full brothers sell as Lots 14 and 19. Maternal brother sells as Lot 80.

8 lot | **PF Bextor 8100 0544**
 CALVED: **9/1/10** | AAA: **+16739613** | TATTOO: **0544**
 #BAR EXT Traveler 205 [AMF-CAF-XF] #N Bar Emulation EXT [AMF-CAF-XF]
#CRA Bextor 872 5205 608 [AMF-CAF-XF] #BAR Queen Traveler 3015
 CRA Lady Jaye 608 498 S Easy #+GAR Sleep Easy 1009 [AMF-CAF-XF]
 HHF 917 Lady 975 498
 #SS Objective T510 OT26 [AMF-CAF-XF] #SS Traveler 6807 T510 [AMF-CAF-XF]
EXAR 608 8100 [AMF-NHF] SS Miss Rita R011 7R8 [AMF-NHF]
 +BA 2779 X 5899 608 [AMF-NHF] #GAR Predestined [AMF-CAF-XF]
 +GAR 6148 Emulation 2779

EXPECTED PROGENY DIFFERENCES							\$ VALUES	
CED	BW	WW	YW	MILK	MARB	RE	\$W	\$B
+7	+2.4	+58	+107	+33	+0.62	+0.51	+34.48	+70.73

BIRTH WT.: **90** | ADJ. WNG. WT.: **820** / ET | ADJ. YRLG. WT.: **1210** / ET
 ADJ. %IMF **3.81** / R **103** | ADJ. REA **12.6**
 Top 2% Milk; 5% YW, \$W; 10% WW, \$B.
 Full brother sells as Lot 65.

9 lot | **PF Traveler 004 0545** [AMF]
 CALVED: **9/1/10** | AAA: **16803509** | TATTOO: **0545**
 #Sitz Traveler 8180 [AMF-CAF-XF] #GDAR Traveler 71 [AMF-CAF-XF]
#SAV 8180 Traveler 004 [AMF-CAF-XF] Sitz Everelda Entense 1137
 +Boyd Forever Lady 8003 #AAR New Trend
 SVF Forever Lady 57D
 #CA Future Direction 5321 [AMC-NHC-XF] #GAR Precision 1680 [AMC-NHC]
PF 5321 Tridge 5513 [AMC] CA Miss Power Fix 308 [AMF]
 +PF 104 Tridge 3002 #TC Freedom 104 [AMF-CAF-XF]
 PAF Tridge 8529

EXPECTED PROGENY DIFFERENCES							\$ VALUES	
CED	BW	WW	YW	MILK	MARB	RE	\$W	\$B
+9	+1.1	+49	+79	+25	+0.40	+0.04	+33.12	+51.34

BIRTH WT.: **62** | ADJ. WNG. WT.: **700** / R **101** | ADJ. YRLG. WT.: **1014**
 ADJ. %IMF **3.87** | ADJ. REA **10.4**
 Top 15% CED.

Calving ease!



10 lot | **PF 6EM3 486 0548**
 CALVED: **9/1/10** | AAA: **+16739808** | TATTOO: **0548**
 #OCC Emblazon 854E [CAF-M1F] #DHD Traveler 6807 [AMF-M1F-NHF]
+Rito 6EM3 of 4L1 Emblazon [AMF-CAF-XF] Dixie Erica of CH 1019
 +Rita 4L1 of 2536 208 [AMF-CAF-NHF] #Bon View New Design 208 [CAC-AMF-NHF]
 GAR Precision 2536 [AMC-NHF]
 #BAR EXT Traveler 205 [AMF-CAF-XF] #N Bar Emulation EXT [AMF-CAF-XF]
+BAAR USA Lady Jaye 486 #BAR Queen Traveler 3015
 CRA Lady Jaye 608 498 S Easy #+GAR Sleep Easy 1009 [AMF-CAF-XF]
 HHF 917 Lady 975 498

EXPECTED PROGENY DIFFERENCES							\$ VALUES	
CED	BW	WW	YW	MILK	MARB	RE	\$W	\$B
+14	-0.6	+48	+85	+23	+0.35	+0.57	+35.79	+40.04

BIRTH WT.: **48** | ADJ. WNG. WT.: **666** / ET | ADJ. YRLG. WT.: **1085** / ET
Calving ease! ADJ. %IMF **4.04** / R **109** | ADJ. REA **14.8** / R **109**
 Top 1% CED; 5% \$W; 10% BW; 15% RE.
 Full brother sells as Lot 20. Maternal brothers sell as Lots 37 and 78.



11 lot | **PF Upward T302 0549**
 CALVED: **9/1/10** | AAA: **16739900** | TATTOO: **0549**
 Connealy Onward [AMF-CAF-XF] #Connealy Lead On [AMF-CAF-XF]
Sitz Upward 307R [AMF-CAF-XF] Altune of Conanga 6104
 Sitz Henrietta Pride 81M #Sitz Value 7097 [AMF-CAF-XF]
 Sitz Henrietta Pride 1370
 #+Rito 112 of 2536 Rito 616 [AMF-CAF-XF] #Rito 616 of 4B20 6807 [AMF-CAF-XF]
Limestone Prosperity T302 GAR Precision 2536 [AMC-NHF]
 G 13 BAAR Prosperity 4096 #Hoff First Edition 058 242 [AMF-NHF]
 #G13 Traveler 9428

EXPECTED PROGENY DIFFERENCES							\$ VALUES	
CED	BW	WW	YW	MILK	MARB	RE	\$W	\$B
-4	+5.2	+66	+128	+33	+0.43	+0.59	+19.06	+77.87

BIRTH WT.: **88** | ADJ. WNG. WT.: **768** / R **111** | ADJ. YRLG. WT.: **1368** / R **121**
 ADJ. %IMF **4.12** / R **105** | ADJ. REA **14.1** / R **113**
 Top 1% WW, YW; 2% Milk, \$B; 15% RE.

FALL YEARLING BULLS



Lot 12

12 Werner Final Answer 0220

CALVED: 9/2/10 | AAA: 16776157 | TATTOO: 0220

- #Sitz Traveler 8180 [AMF-CAF-XF]
- #GDAR Traveler 71 [AMF-CAF-XF]
- #SAV Final Answer 0035 [AMF-CAF-XF]
- Sitz Everelda Entense 1137
- SAV Emulous 8145 [CAF]
- #Bon View Bando 598 [CAC-AMF]
- SAV Sky Emulous 2124
- #Twin Valley Precision E161 [NHC-AMF-XF]
- #GAR Precision 1680 [AMC-NHC]
- +RR Ruth 284G 4053 [AMF-NHF]
- +WCC Blackcap C9 [RDC]
- +Shady Brook Ruth 284G
- #Sitz Traveler 9929
- Bon View Ruth 808

EXPECTED PROGENY DIFFERENCES								\$ VALUES	
CED	BW	WW	YW	MILK	MARB	RE		\$W	\$B
+5	+2.1	+49	+96	+19	+38	+41		+24.86	+56.45

BIRTH WT.: 74 | ADJ. WNG. WT.: 726 | ADJ. YRLG. WT.: 1219 / R 109
 ADJ. %IMF 3.77 / R 121 | ADJ. REA 14.1 / R 107

13 PF 6EM3 Emblazon 0504

CALVED: 9/2/10 | AAA: +16739819 | TATTOO: 0504

- #+OCC Emblazon 854E [CAF-M1F]
- #DHD Traveler 6807 [AMF-M1F-NHF]
- +Rito 6EM3 of 4L1 Emblazon [AMF-CAF-XF]
- Dixie Erica of CH 1019
- +Rita 4L1 of 2536 208 [AMF-CAF-NHF]
- #Bon View New Design 208 [CAC-AMF-NHF]
- GAR Precision 2536 [AMC-NHF]
- #Hunts Calculator 2720 [AMF-CAF-XF]
- GDAR 711 Computer
- #Reich Bonnie M12 [AMF]
- RR 1148 Ida 720A
- Reich Bonnie K56
- #Leachman Saughatchee 3000C [AMF-CAF-XF]
- #TA Bonny G62

EXPECTED PROGENY DIFFERENCES								\$ VALUES	
CED	BW	WW	YW	MILK	MARB	RE		\$W	\$B
+10	-0.1	+53	+96	+21	+07	+61		+35.06	+25.81

BIRTH WT.: 54 | ADJ. WNG. WT.: 712 / ET | ADJ. YRLG. WT.: 1051 / ET
 ADJ. %IMF 3.44 | ADJ. REA 14.9 / R 110
 Top 10% CED; 15% BW, RE.
 Full brothers sell as Lots 1, 15 and 17.

14 PF Upward 5382 0524

CALVED: 9/2/10 | AAA: +16739920 | TATTOO: 0524

- Connealy Onward [AMF-CAF-XF]
- #Connealy Lead On [AMF-CAF-XF]
- Sitz Upward 307R [AMF-CAF-XF]
- Altune of Conanga 6104
- Sitz Henrietta Pride 81M
- #Sitz Value 7097 [AMF-CAF-XF]
- Sitz Henrietta Pride 1370
- +Rito 112 of 2536 Rito 616 [AMF-CAF-XF]
- #Rito 616 of 4B20 6807 [AMF-CAF-XF]
- +SandPoint Rita 5382 [AMF]
- GAR Precision 2536 [AMC-NHF]
- GAR Prime Time 2409 [AMF-NHF]
- #Gardens Prime Time [AMF-CAF-XF]
- +GAR EXT 327 [AMF]

EXPECTED PROGENY DIFFERENCES								\$ VALUES	
CED	BW	WW	YW	MILK	MARB	RE		\$W	\$B
+8	+1.7	+63	+115	+36	+46	+27		+33.18	+70.22

BIRTH WT.: 78 | ADJ. WNG. WT.: 732 / ET | ADJ. YRLG. WT.: 1094 / ET
 ADJ. %IMF 3.81 / R 103 | ADJ. REA 11.3
 Top 1% YW, Milk; 3% WW; 10% \$W; 15% \$B.
 Full brothers sell as Lots 7 and 19. Maternal brother sells as Lot 80.

FALL YEARLING BULLS

15 PF 6EM3 M12 0525

CALVED: 9/2/10 | AAA: +16739824 | TATTOO: 0525

- #+OCC Emblazon 854E [CAF-M1F]
- #DHD Traveler 6807 [AMF-M1F-NHF]
- +Rito 6EM3 of 4L1 Emblazon [AMF-CAF-XF]
- Dixie Erica of CH 1019
- +Rita 4L1 of 2536 208 [AMF-CAF-NHF]
- #Bon View New Design 208 [CAC-AMF-NHF]
- GAR Precision 2536 [AMC-NHF]
- #Hunts Calculator 2720 [AMF-CAF-XF]
- GDAR 711 Computer
- #Reich Bonnie M12 [AMF]
- RR 1148 Ida 720A
- Reich Bonnie K56
- #Leachman Saughatchee 3000C [AMF-CAF-XF]
- #TA Bonny G62

EXPECTED PROGENY DIFFERENCES							\$ VALUES	
CED	BW	WW	YW	MILK	MARB	RE	\$W	\$B
+10	-0.1	+53	+96	+21	+09	+47	+35.06	+26.19

BIRTH WT.: 72 | ADJ. WNG. WT.: 703 / ET | ADJ. YRLG. WT.: 1082 / ET

Calving ease!
 ADJ. %IMF 3.63 | ADJ. REA 13.4
 Top 10% CED; 15% BW, \$W.
 Full brothers sell as Lots 1, 13 and 17.

16 PF Upward 6547 0530 of EF

CALVED: 9/2/10 | AAA: 16739905 | TATTOO: 0530

- Connealy Onward [AMF-CAF-XF]
- #Connealy Lead On [AMF-CAF-XF]
- Sitz Upward 307R [AMF-CAF-XF]
- Altune of Conanga 6104
- Sitz Henrietta Pride 81M
- #Sitz Value 7097 [AMF-CAF-XF]
- Sitz Henrietta Pride 1370
- #BR Midland [AMF-CAF-XF]
- #Twin Valley Precision E161 [NHC-AMF-XF]
- +PF 11 Primrose 6547 of EF
- BR Royal Lass 7036-19
- +PF 0H29 Primrose 4370
- #Summitcrest High Prime 0H29 [AMF-CAF-XF]
- +WCC Primrose J146

EXPECTED PROGENY DIFFERENCES								\$ VALUES	
CED	BW	WW	YW	MILK	MARB	RE		\$W	\$B
+12	-0.7	+55	+102	+29	+47	+32		+31.70	+69.95

BIRTH WT.: 52 | ADJ. WNG. WT.: 669 | ADJ. YRLG. WT.: 1074

Calving ease!
 ADJ. %IMF 3.67 | ADJ. REA 10.5
 Top 3% CED; 10% BW, Milk; 15% YW, \$W, \$B.

17 PF 6EM3 M12 0536

CALVED: 9/2/10 | AAA: +16739858 | TATTOO: 0536

- #+OCC Emblazon 854E [CAF-M1F]
- #DHD Traveler 6807 [AMF-M1F-NHF]
- +Rito 6EM3 of 4L1 Emblazon [AMF-CAF-XF]
- Dixie Erica of CH 1019
- +Rita 4L1 of 2536 208 [AMF-CAF-NHF]
- #Bon View New Design 208 [CAC-AMF-NHF]
- GAR Precision 2536 [AMC-NHF]
- #Hunts Calculator 2720 [AMF-CAF-XF]
- GDAR 711 Computer
- #Reich Bonnie M12 [AMF]
- RR 1148 Ida 720A
- Reich Bonnie K56
- #Leachman Saughatchee 3000C [AMF-CAF-XF]
- #TA Bonny G62

EXPECTED PROGENY DIFFERENCES								\$ VALUES	
CED	BW	WW	YW	MILK	MARB	RE		\$W	\$B
+10	-0.1	+53	+96	+21	+06	+50		+35.06	+25.61

BIRTH WT.: 74 | ADJ. WNG. WT.: 667 / ET | ADJ. YRLG. WT.: 1107 / ET

Calving ease!
 ADJ. %IMF 3.36 | ADJ. REA 13.8 / R 101
 Top 10% CED; 15% BW.
 Full brothers sell as Lots 1, 13 and 15.

18 PF 6EM3 U0410 0547

CALVED: 9/2/10 | AAA: +16739800 | TATTOO: 0547

- #+OCC Emblazon 854E [CAF-M1F]
- #DHD Traveler 6807 [AMF-M1F-NHF]
- +Rito 6EM3 of 4L1 Emblazon [AMF-CAF-XF]
- Dixie Erica of CH 1019
- +Rita 4L1 of 2536 208 [AMF-CAF-NHF]
- #Bon View New Design 208 [CAC-AMF-NHF]
- GAR Precision 2536 [AMC-NHF]
- #SS Objective T510 0T26 [AMF-CAF-XF]
- #SS Traveler 6807 T510 [AMF-CAF-XF]
- +Prospect Hill Rita U0410 [AMF]
- SS Miss Rita R011 7R8 [AMF-NHF]
- +GAR New Design 1440 [AMF]
- #B/R New Design 036 [AMF-CAF-XF]
- +GAR EXT 614 [AMF]

EXPECTED PROGENY DIFFERENCES							\$ VALUES	
CED	BW	WW	YW	MILK	MARB	RE	\$W	\$B
					+36	+76		

BIRTH WT.: 68 | ADJ. WNG. WT.: 722 / ET | ADJ. YRLG. WT.: 1125 / ET

ADJ. %IMF 3.86 / R 104 | ADJ. REA 15.4 / R 113
 Top 3% RE.
 Full brother sells as Lot 6.

FALL YEARLING BULLS

19 PF Upward 0503

CALVED: 9/3/10 | AAA: +16739917 | TATTOO: 0503

Connealy Onward [AMF-CAF-XF]
Sitz Upward 307R [AMF-CAF-XF]
Sitz Henrietta Pride 81M

#Connealy Lead On [AMF-CAF-XF]
Altune of Conanga 6104
#Sitz Value 7097 [AMF-CAF-XF]
Sitz Henrietta Pride 1370

#Rito 112 of 2536 Rito 616 [AMF-CAF-XF]

#Rito 616 of 4B20 6807 [AMF-CAF-XF]
GAR Precision 2536 [AMC-NHF]
#Gardens Prime Time [AMF-CAF-XF]
+GAR EXT 327 [AMF]

+SandPoint Rita 5382 [AMF]
GAR Prime Time 2409 [AMF-NHF]

CED	EXPECTED PROGENY DIFFERENCES						\$ VALUES	
	BW	WW	YW	MILK	MARB	RE	\$W	\$B
+8	+1.7	+63	+115	+36	+46	+35	+33.18	+71.08

BIRTH WT.: 68 | ADJ. WNG. WT.: 721 / ET | ADJ. YRLG. WT.: 1132 / ET

Calving ease!

ADJ. %IMF 3.84 / R 104 | ADJ. REA 12.4

Top 1% YW, Milk; 3% WW; 10% \$B.

Full brothers sell as Lots 7 and 14. Maternal brother sells as Lot 80.

20 PF 6EM3 486 0551

CALVED: 9/4/10 | AAA: +16739812 | TATTOO: 0551

+Rito 6EM3 of 4L1 Emblazon [AMF-CAF-XF]
+Rita 4L1 of 2536 208 [AMF-CAF-NHF]

#DHD Traveler 6807 [AMF-M1F-NHF]
Dixie Erica of CH 1019
#Bon View New Design 208 [CAC-AMF-NHF]
GAR Precision 2536 [AMC-NHF]

#BAR EXT Traveler 205 [AMF-CAF-XF]

#N Bar Emulation EXT [AMF-CAF-XF]
#BAR Queen Traveler 3015
#+GAR Sleep Easy 1009 [AMF-CAF-XF]
HHF 917 Lady 975 498

+BAAR USA Lady Jaye 486
CRA Lady Jaye 608 498 S Easy

CED	EXPECTED PROGENY DIFFERENCES						\$ VALUES	
	BW	WW	YW	MILK	MARB	RE	\$W	\$B
+14	-0.6	+48	+85	+23	+33	+50	+35.79	+37.82

BIRTH WT.: 52 | ADJ. WNG. WT.: 602 / ET | ADJ. YRLG. WT.: 1108 / ET

Calving ease!

ADJ. %IMF 3.53 | ADJ. REA 13.9

Top 1% CED; 5% \$W; 10% BW.

Full brother sells as Lot 10. Maternal brothers sell as Lots 37 and 78.



21 PF Traveler 004 667 0552

CALVED: 9/4/10 | AAA: 16719983 | TATTOO: 0552

#Sitz Traveler 8180 [AMF-CAF-XF]
#SAV 8180 Traveler 004 [AMF-CAF-XF]
+Boyd Forever Lady 8003

#GDAR Traveler 71 [AMF-CAF-XF]
Sitz Everelda Entense 1137
#AAR New Trend
SVF Forever Lady 57D

#BR Midland [AMF-CAF-XF]

#Twin Valley Precision E161 [NHC-AMF-XF]
BR Royal Lass 7036-19
+J&J Improvement 128
+KJ Empress 532

J&J Empress 667
J&J Empress 345

CED	EXPECTED PROGENY DIFFERENCES						\$ VALUES	
	BW	WW	YW	MILK	MARB	RE	\$W	\$B
+5	+2.5	+50	+97	+20	+27	+36	+23.02	+55.61

BIRTH WT.: 72 | ADJ. WNG. WT.: 699 / R 101 | ADJ. YRLG. WT.: 1233 / R 109

ADJ. %IMF 3.56 | ADJ. REA 15.1 / R 121

FALL YEARLING BULLS

22 PF 6EM3 3419 0555

CALVED: 9/5/10 | AAA: 16739816 | TATTOO: 0555

#OCC Emblazon 854E [CAF-M1F]
+Rito 6EM3 of 4L1 Emblazon [AMF-CAF-XF]
+Rita 4L1 of 2536 208 [AMF-CAF-NHF]

#DHD Traveler 6807 [AMF-M1F-NHF]
Dixie Erica of CH 1019
#Bon View New Design 208 [CAC-AMF-NHF]
GAR Precision 2536 [AMC-NHF]

#TC Freedom 104 [AMF-CAF-XF]

#Connealy Forefront [AMF-CAF-XF]
#TC Ruby 9095 [CAF]
#N Bar Emulation EXT [AMF-CAF-XF]
PAF Lady Travel 5112

+PF 104 Tridge 3419 [AMF]
PAF Tridge 8529

CED	EXPECTED PROGENY DIFFERENCES						\$ VALUES	
	BW	WW	YW	MILK	MARB	RE	\$W	\$B
+6	+2.6	+52	+92	+19	+11	+38	+26.19	+39.56

BIRTH WT.: 76 | ADJ. WNG. WT.: 684 | ADJ. YRLG. WT.: 1060

ADJ. %IMF 3.47 | ADJ. REA 12.5

23 PF Upward 296S 0556

CALVED: 9/5/10 | AAA: +16903233 | TATTOO: 0556

Connealy Onward [AMF-CAF-XF]
Sitz Upward 307R [AMF-CAF-XF]
Sitz Henrietta Pride 81M

#Connealy Lead On [AMF-CAF-XF]
Altune of Conanga 6104
#Sitz Value 7097 [AMF-CAF-XF]
Sitz Henrietta Pride 1370

#SS Objective T510 OT26 [AMF-CAF-XF]

#SS Traveler 6807 T510 [AMF-CAF-XF]
SS Miss Rita R011 7R8 [AMF-NHF]
#GAR Precision 1680 [AMC-NHC]
GAR Prime Time 2409 [AMF-NHF]

+Eagle G93 Rita 296S [AMF-NHF]
+GAR Precision G93 [AMC-NHF]

CED	EXPECTED PROGENY DIFFERENCES						\$ VALUES	
	BW	WW	YW	MILK	MARB	RE	\$W	\$B
+9	+1.5	+61	+115	+34	+48	+34	+29.35	+72.07

BIRTH WT.: 74 | ADJ. WNG. WT.: 684 / ET | ADJ. YRLG. WT.: 1063 / ET

Calving ease!

ADJ. %IMF 3.39 | ADJ. REA 9.7

Top 1% YW; 2% Milk; 5% WW; 10% \$B.

Maternal brother sells as Lot 34.

24 PF Upward 6200 0562

CALVED: 9/9/10 | AAA: 16739916 | TATTOO: 0562

Connealy Onward [AMF-CAF-XF]
Sitz Upward 307R [AMF-CAF-XF]
Sitz Henrietta Pride 81M

#Connealy Lead On [AMF-CAF-XF]
Altune of Conanga 6104
#Sitz Value 7097 [AMF-CAF-XF]
Sitz Henrietta Pride 1370

#BR Midland [AMF-CAF-XF]

#Twin Valley Precision E161 [NHC-AMF-XF]
BR Royal Lass 7036-19
#+Leachman Right Time
Hyline Pride 265

+PF 11 Pride 6200
+Hyline Pride G242 [AMF-NHF]

CED	EXPECTED PROGENY DIFFERENCES						\$ VALUES	
	BW	WW	YW	MILK	MARB	RE	\$W	\$B
+9	+0.6	+61	+109	+30	+45	+26	+32.64	+66.95

BIRTH WT.: 60 | ADJ. WNG. WT.: 731 / R 105 | ADJ. YRLG. WT.: 1128

Calving ease!

ADJ. %IMF 4.12 / R 105 | ADJ. REA 11.4

Top 4% WW, YW; 10% Milk, \$W.

25 PF Upward 7503 0572

CALVED: 9/14/10 | AAA: 16739895 | TATTOO: 0572

Connealy Onward [AMF-CAF-XF]
Sitz Upward 307R [AMF-CAF-XF]
Sitz Henrietta Pride 81M

#Connealy Lead On [AMF-CAF-XF]
Altune of Conanga 6104
#Sitz Value 7097 [AMF-CAF-XF]
Sitz Henrietta Pride 1370

#GAR Predestined [AMF-CAF-XF]

#B/R New Design 036 [AMF-CAF-XF]
#+GAR EXT 4206
#GAR Precision 1680 [AMC-NHC]
+Thomas Lucy 9638 [AMF]

+PF 5899 Lucy 7503 [AMF-NHF]
Thomas Lucy 1493 [AMC-NHF]

CED	EXPECTED PROGENY DIFFERENCES						\$ VALUES	
	BW	WW	YW	MILK	MARB	RE	\$W	\$B
+0	+5.1	+50	+105	+33	+57	+65	+15.31	+79.58

BIRTH WT.: 80 | ADJ. WNG. WT.: 639 | ADJ. YRLG. WT.: 1143 / R 101

ADJ. %IMF 3.71 | ADJ. REA 12.0

Top 2% Milk, \$B; 10% YW, RE.

FALL YEARLING BULLS

26 RR Final Answer 0269

CALVED: 9/15/10 | AAA: 16720690 | TATTOO: 0269

#Sitz Traveler 8180 [AMF-CAF-XF]
#SAV Final Answer 0035 [AMF-CAF-XF]
 SAV Emulous 8145 [CAF]

#GDAR Traveler 71 [AMF-CAF-XF]
 Sitz Everelda Entense 1137
 #Bon View Bando 598 [CAC-AMF]
 SAV Sky Emulous 2124

#Bon View New Design 878 [AMF-CAF-XF]
+RR Grade 915 8354
 RR Yield Grade 915 [AMF]

#B/R New Design 036 [AMF-CAF-XF]
 Bon View Gammer 85 [CAC]
 #+GAR Yield Grade [AMF-CAF-XF]
 +GAR Basin Max A22

EXPECTED PROGENY DIFFERENCES							\$ VALUES	
CED	BW	WW	YW	MILK	MARB	RE	\$W	\$B
+9	+1.0	+56	+110	+25	+39	+15	+26.94	+59.70

BIRTH WT.: 68 | ADJ. WNG. WT.: 662 / R 104 | ADJ. YRLG. WT.: 1248 / R 117
 Calving ease!
 ADJ. %IMF 3.08 | ADJ. REA 11.8
 Top 3% YW; 15% CED, WW.

27 PF Bismarck 8509 0577 [NHF]

CALVED: 9/16/10 | AAA: 16847075 | TATTOO: 0577

#+GAR Grid Maker [AMF-CAF-XF]
+SAV Bismarck 5682
 SAV Abigale 0451

#GDAR Traveler 044 [AMF-CAF-XF]
 GAR Precision 2536 [AMC-NHF]
 #Schoenes Fix It 826 [AMF-CAF-XF]
 SAV Abigale 6062

#+OCC Emblazon 854E [CAF-M1F]
+PF 854E Ester 8509 of RCF [NHC]
 +Thomas Ester 3666 [NHC]

#DHD Traveler 6807 [AMF-M1F-NHF]
 Dixie Erica of CH 1019
 #Twin Valley Precision E161 [NHC-AMF-XF]
 #Thomas Ester 4123

EXPECTED PROGENY DIFFERENCES							\$ VALUES	
CED	BW	WW	YW	MILK	MARB	RE	\$W	\$B
+12	-0.2	+51	+88	+23	+20	+56	+32.37	+44.33

BIRTH WT.: 60 | ADJ. WNG. WT.: 611 | ADJ. YRLG. WT.: 1043
 Calving ease!
 ADJ. %IMF 3.54 | ADJ. REA 11.6
 Top 3% CED; 15% RE.

28 PF Traveler 004 7114 0588

CALVED: 9/24/10 | AAA: 16739623 | TATTOO: 0588

#Sitz Traveler 8180 [AMF-CAF-XF]
#SAV 8180 Traveler 004 [AMF-CAF-XF]
 +Boyd Forever Lady 8003

#GDAR Traveler 71 [AMF-CAF-XF]
 Sitz Everelda Entense 1137
 #AAR New Trend
 SVF Forever Lady 57D

#+EXAR New Look 2971 [AMF-CAF-XF]
+PF 2971 Bardolena 7114 [NHF]
 +PF E161 Bardolena 3143 [NHC-AMF]

#Bon View New Design 1407 [AMF-CAF-XF]
 N Bar Primrose 2424
 #Twin Valley Precision E161 [NHC-AMF-XF]
 GK Betsy Bardolena 323A

EXPECTED PROGENY DIFFERENCES							\$ VALUES	
CED	BW	WW	YW	MILK	MARB	RE	\$W	\$B
+3	+2.7	+59	+106	+23	+30	+18	+27.29	+53.60

BIRTH WT.: 70 | ADJ. WNG. WT.: 781 / R 113 | ADJ. YRLG. WT.: 1237 / R 109
 ADJ. %IMF 3.69 | ADJ. REA 12.0
 Top 10% WW, YW.

29 PF 5118 Rito 660 0591

CALVED: 9/27/10 | AAA: 16719986 | TATTOO: 0591

#+Rito 112 of 2536 Rito 616 [AMF-CAF-XF]
+EXAR Rito 5118 of Rito 112 [AMF-CAF-XF]
 +GAR New Design 1200 [AMF-NHF]

#Rito 616 of 4B20 6807 [AMF-CAF-XF]
 GAR Precision 2536 [AMC-NHF]
 #B/R New Design 036 [AMF-CAF-XF]
 GAR Precision 2536 [AMC-NHF]

#Papa Equator 2928 [AMF-M1F-NHF]
+MCM Blackbird 660
 Patton Blackbird 804 YAF

#+Papa Power 096
 #Papa Envious Blackbird 8849
 #+Krugerrand Merger 34 [RDF]
 Blackbird 691 Linda of YAF

EXPECTED PROGENY DIFFERENCES							\$ VALUES	
CED	BW	WW	YW	MILK	MARB	RE	\$W	\$B
+7	+1.2	+42	+86	+26	+43	+31	+24.41	+64.15

BIRTH WT.: 58 | ADJ. WNG. WT.: 626 | ADJ. YRLG. WT.: 1079
 Calving ease!
 ADJ. %IMF 4.02 / R 103 | ADJ. REA 11.7
 Top 15% Milk.

FALL YEARLING BULLS

30 PF Titlelist 4884 0584

CALVED: 10/5/10 | AAA: 16879219 | TATTOO: 0584

#BR Midland [AMF-CAF-XF]
EXAR Titlelist T011 [AMF-CAF-XF]
 EXG Blackcap R054 R3 [CAF]

#Twin Valley Precision E161 [NHC-AMF-XF]
 BR Royal Lass 7036-19
 EXAR Sudden Impact 1537 [AMF-CAF-XF]
 EXG Blackcap N145 R3

#+EXAR New Look 2971 [AMF-CAF-XF]
+EXAR Rita 4884 [AMF-NHF]
 GAR EXT 1206 [AMF]

#Bon View New Design 1407 [AMF-CAF-XF]
 N Bar Primrose 2424
 #N Bar Emulation EXT [AMF-CAF-XF]
 +GAR 6807 Traveler 774

EXPECTED PROGENY DIFFERENCES							\$ VALUES	
CED	BW	WW	YW	MILK	MARB	RE	\$W	\$B
+10	+0.3	+45	+83	+24	+40	+54	+29.05	+61.08

BIRTH WT.: 60 | ADJ. WNG. WT.: 678 | ADJ. YRLG. WT.: 1150 / R 102
 Calving ease!
 ADJ. %IMF 3.91 / R 100 | ADJ. REA 12.6 / R 101
 Top 10% CED.

31 PF Roundup 560R 0599

CALVED: 10/6/10 | AAA: 16916961 | TATTOO: 0599

HARB Pendleton 765 JH [AMF-CAF-XF]
21AR Roundup 7005 [AMF-CAF-XF]
 21AR Blackbird Lady F645 [AMF-NHF]

#SAV Final Answer 0035 [AMF-CAF-XF]
 #HARB Black Lady 375 JH
 #BCC Bushwacker 41-93 [AMF-CAF-XF]
 21AR Blackbird Lady C645

#Connealy Lead On [AMF-CAF-XF]
+Eagle Isabel 560R
 +Eagle 1407 Isabel 2216

#Connealy Leadtime [AMF-CAF-XF]
 Eligence Plus of Conanga
 #Bon View New Design 1407 [AMF-CAF-XF]
 LB 6807 Isabel 339

EXPECTED PROGENY DIFFERENCES							\$ VALUES	
CED	BW	WW	YW	MILK	MARB	RE	\$W	\$B
+3	+2.4	+53	+92	+20	+52	+59	+27.79	+72.17

BIRTH WT.: 78 | ADJ. WNG. WT.: 695 | ADJ. YRLG. WT.: 1117
 ADJ. %IMF 4.17 / R 107 | ADJ. REA 11.4
 Top 10% \$B; 15% RE.

32 PF 5118 7008 0605

CALVED: 10/13/10 | AAA: 16836802 | TATTOO: 0605

#+Rito 112 of 2536 Rito 616 [AMF-CAF-XF]
+EXAR Rito 5118 of Rito 112 [AMF-CAF-XF]
 +GAR New Design 1200 [AMF-NHF]

#Rito 616 of 4B20 6807 [AMF-CAF-XF]
 GAR Precision 2536 [AMC-NHF]
 #B/R New Design 036 [AMF-CAF-XF]
 GAR Precision 2536 [AMC-NHF]

#GAR Predestined [AMF-CAF-XF]
+VVA Barda 7008
 Barda 244 of Woodlawn [AMF]

#B/R New Design 036 [AMF-CAF-XF]
 #+GAR EXT 4206
 #BR Midland [AMF-CAF-XF]
 Barda 1122 BCBR

EXPECTED PROGENY DIFFERENCES							\$ VALUES	
CED	BW	WW	YW	MILK	MARB	RE	\$W	\$B
+5	+3.0	+47	+90	+31	+74	+77	+23.86	+74.99

BIRTH WT.: 68 | ADJ. WNG. WT.: 664 | ADJ. YRLG. WT.: 1085
 ADJ. %IMF 4.11 / R 105 | ADJ. REA 14.0 / R 112
 Top 3% RE; 5% Milk; 10% Marb, \$B.

33 PF Final Answer 8364 0604

CALVED: 10/14/10 | AAA: 16916883 | TATTOO: 0604

#Sitz Traveler 8180 [AMF-CAF-XF]
#SAV Final Answer 0035 [AMF-CAF-XF]
 SAV Emulous 8145 [CAF]

#GDAR Traveler 71 [AMF-CAF-XF]
 Sitz Everelda Entense 1137
 #Bon View Bando 598 [CAC-AMF]
 SAV Sky Emulous 2124

#+GAR Yield Grade [AMF-CAF-XF]
+RR EXT 106 8364 [AMF]
 GAR EXT 1206 [AMF]

#GAR Precision 1680 [AMC-NHC]
 +GAR EXT 4526 [AMF]
 #N Bar Emulation EXT [AMF-CAF-XF]
 +GAR 6807 Traveler 774

EXPECTED PROGENY DIFFERENCES							\$ VALUES	
CED	BW	WW	YW	MILK	MARB	RE	\$W	\$B
+12	-0.4	+53	+100	+23	+31	+42	+29.54	+59.75

BIRTH WT.: 55 | ADJ. WNG. WT.: 638 / R 100 | ADJ. YRLG. WT.: 1126 / R 105
 Calving ease!
 ADJ. %IMF 3.20 | ADJ. REA 13.3 / R 112
 Top 3% CED; 10% BW; 15% YW.

SPRING YEARLING BULLS



SPRING YEARLING ANGUS BULLS

Lots 34-84

Yearling weights on the 2011 bulls will be available sale day.

34 PF Predestined 296S 1008

CALVED: 1/1/11 | AAA: +16930852 | TATTOO: 1008

#B/R New Design 036 [AMF-CAF-XF]

#VDAR New Trend 315 [AMF-CAF-XF]

#GAR Predestined [AMF-CAF-XF]

B/R Blackcap Empress 76

#+GAR EXT 4206

#N Bar Emulation EXT [AMF-CAF-XF]

+GAR 6807 Traveler 1432

#SS Objective T510 OT26 [AMF-CAF-XF]

#SS Traveler 6807 T510 [AMF-CAF-XF]

+Eagle G93 Rita 296S [AMF-NHF]

SS Miss Rita R011 7R8 [AMF-NHF]

+GAR Precision G93 [AMC-NHF]

#GAR Precision 1680 [AMC-NHC]

GAR Prime Time 2409 [AMF-NHF]

CED	EXPECTED PROGENY DIFFERENCES						\$ VALUES	
	BW	WW	YW	MILK	MARB	RE	\$W	\$B
I+8	I+2.3	I+51	I+96	I+27	I+.85	I+.55	+26.17	+70.67

BIRTH WT.: 60 | ADJ. WNG. WT.: 732 / ET

ADJ. %IMF 4.76 | ADJ. REA 12.8

Top 5% Marb; 10% \$B; 15% Milk, RE.

Maternal brother sells as Lot 23.



Lot 35

35 PF Credence 71599 1012

CALVED: 1/5/11 | AAA: +16924502 | TATTOO: 1012

#SS Objective T510 OT26 [AMF-CAF-XF]

#SS Traveler 6807 T510 [AMF-CAF-XF]

+SQ Credence 67S [AMF-CAF-XF]

SS Miss Rita R011 7R8 [AMF-NHF]

+Rita 3540 of 021 Rito 111 [AMF]

#+Rito 111 of 2536 Rito 616 [AMF-M1F-NHF]

Rita 021 of 7R11 RDA [AMF]

#GAR Predestined [AMF-CAF-XF]

#B/R New Design 036 [AMF-CAF-XF]

+EXAR Rita 71599 [NHF]

+GAR EXT 4206

+Rita 1197 of 2536 Rito 616 [AMF-NHF]

#Rito 616 of 4B20 6807 [AMF-CAF-XF]

GAR Precision 2536 [AMC-NHF]

CED	EXPECTED PROGENY DIFFERENCES						\$ VALUES	
	BW	WW	YW	MILK	MARB	RE	\$W	\$B
I+11	I+1.2	I+56	I+98	I+29	I+.96	I+.58	+37.20	+75.92

BIRTH WT.: 70 | ADJ. WNG. WT.: 691 / ET

ADJ. %IMF 7.07 / R 140 | ADJ. REA 13.9 / R 105

Top 2% Marb, \$W; 4% \$B; 10% CED, Milk; 15% WW, RE.

Denver pen bull. Maternal brother sells as Lot 76.

SPRING YEARLING BULLS

36 PF Frontman W461 1010

CALVED: 1/7/11 | AAA: 16937875 | TATTOO: 1010

#Connealy Front Page 0228 [CAF-M1F]

#Connealy Forefront [AMF-CAF-XF]

Kesslers Frontman R001 [AMF-CAF-XF]

#Ebony Lit of Conanga 840

Kesslers Bell 0024

#TC Rancher 056

Kesslers Bell 8055

#CRA Bextor 872 5205 608 [AMF-CAF-XF]

#BAR EXT Traveler 205 [AMF-CAF-XF]

Limestone Rita W461 [AMF-NHF]

CRA Lady Jaye 608 498 S Easy

+Limestone Rita T533 [AMF-NHF]

#CA Future Direction 5321 [AMC-NHC-XF]

+GAR New Design 1309

CED	EXPECTED PROGENY DIFFERENCES						\$ VALUES	
	BW	WW	YW	MILK	MARB	RE	\$W	\$B
+0.7	+56	+96	+29	I+.41	I+.50		+33.45	+57.55

BIRTH WT.: 68 | ADJ. WNG. WT.: 751 / R 110

ADJ. %IMF 3.80 | ADJ. REA 11.6

Top 10% \$W; 15% WW.

Calving ease!

37 PF 6807 486 1181

CALVED: 1/12/11 | AAA: +16930771 | TATTOO: 1181

#QAS Traveler 23-4 [AMF-CAF-XF]

#Band 234 of Ideal 3163

#DHD Traveler 6807 [AMF-M1F-NHF]

QAS Blackbird Eve 601 1

#Bernindful Maid DHD 0807

#PBC 707 1M F0203

Bernindful Maid of RR 1079

#BAR EXT Traveler 205 [AMF-CAF-XF]

#N Bar Emulation EXT [AMF-CAF-XF]

+BAAR USA Lady Jaye 486

#BAR Queen Traveler 3015

CRA Lady Jaye 608 498 S Easy

#+GAR Sleep Easy 1009 [AMF-CAF-XF]

HHF 917 Lady 975 498

CED	EXPECTED PROGENY DIFFERENCES						\$ VALUES	
	BW	WW	YW	MILK	MARB	RE	\$W	\$B
I+12	I+0.1	I+36	I+70	I+20	I+.25	I+.22	+27.67	+38.63

BIRTH WT.: 76 | ADJ. WNG. WT.: 582 / ET

ADJ. %IMF 3.29 | ADJ. REA 10.5

Top 3% CED.

Maternal brothers sell as Lots 10, 20 and 78.

Calving ease!

38 PF Bismarck 9054 1026 [CAC]

CALVED: 1/13/11 | AAA: 16912190 | TATTOO: 1026

#+GAR Grid Maker [AMF-CAF-XF]

#GDAR Traveler 044 [AMF-CAF-XF]

+SAV Bismarck 5682

GAR Precision 2536 [AMC-NHF]

SAV Abigale 0451

#Schoenes Fix It 826 [AMF-CAF-XF]

SAV Abigale 6062

+SAV 5175 Bando 4597 [CAC-AMF-XF]

#+SAF 598 Bando 5175 [CAC-AMF]

PF 4597 Emulation 9054 [CAC-NHF]

+Champion Hill Blossom 1611 [NHC-AMF]

+DCF Future Emulation 7518 [NHC-AMF]

#Schurrtop MC 2500 [AMF-CAF-M1F]

LCC Future Emulation 196 [AMC-NHC]

CED	EXPECTED PROGENY DIFFERENCES						\$ VALUES	
	BW	WW	YW	MILK	MARB	RE	\$W	\$B
+10	+0.4	+56	+98	+30	I+.21	I+.56	+33.08	+54.34

BIRTH WT.: 60 | ADJ. WNG. WT.: 742 / R 102

ADJ. %IMF NA | ADJ. REA NA

Top 10% CED, Milk, \$W; 15% RE.

Calving ease!

39 PF Bismarck 9494 1025

CALVED: 1/13/11 | AAA: 16912189 | TATTOO: 1025

#+GAR Grid Maker [AMF-CAF-XF]

#GDAR Traveler 044 [AMF-CAF-XF]

+SAV Bismarck 5682

GAR Precision 2536 [AMC-NHF]

SAV Abigale 0451

#Schoenes Fix It 826 [AMF-CAF-XF]

SAV Abigale 6062

Basin Spread 304T [AMF-CAF-XF]

Basin Expedition 768J

Basin Blackcap 9494 [NHF]

+Basin Lucy 3829 [AMF-NHF]

21AR Blackcap 7003A [AMF-NHF]

HARB Pendleton 765 JH [AMF-CAF-XF]

21AR Blackcap F73D [AMF-NHF]

CED	EXPECTED PROGENY DIFFERENCES						\$ VALUES	
	BW	WW	YW	MILK	MARB	RE	\$W	\$B
+11	-0.1	+56	+95	+26	I+.03	I+.35	+34.31	+33.81

BIRTH WT.: 64 | ADJ. WNG. WT.: 699

ADJ. %IMF 3.93 | ADJ. REA 11.9

Top 5% \$W; 10% CED; 15% BW.

Calving ease!

SPRING YEARLING BULLS

40 PF 6EM3 Emblazon 9030 1036

CALVED: 1/18/11 | AAA: 16919072 | TATTOO: 1036

#OCC Emblazon 854E [CAF-M1F]
+Rito 6EM3 of 4L1 Emblazon [AMF-CAF-XF]
 +Rita 4L1 of 2536 208 [AMF-CAF-NHF]

#DHD Traveler 6807 [AMF-M1F-NHF]
 Dixie Erica of CH 1019
 #Bon View New Design 208 [CAC-AMF-NHF]
 GAR Precision 2536 [AMC-NHF]

#SS Objective T510 OT26 [AMF-CAF-XF]

#SS Traveler 6807 T510 [AMF-CAF-XF]
 SS Miss Rita R011 7R8 [AMF-NHF]
 #Schurrtop MC 2500 [AMF-CAF-M1F]
 #+J&J Empress 3108

PF OT26 Empress 9030
 J&J Empress 634

CED	EXPECTED PROGENY DIFFERENCES						\$ VALUES	
	BW	WW	YW	MILK	MARB	RE	\$W	\$B
+11	+0.3	+60	+105	+24	+31	+88	+32.90	+60.18

BIRTH WT.: 66 | ADJ. WNG. WT.: 778 / R 111

ADJ. %IMF 4.70 | ADJ. REA 15.8 / R 126

Top 1% RE; 3% CED; 10% WW, YW, \$W.

Calving ease!

41 OSU Bismarck 1140

CALVED: 1/20/11 | AAA: 16897592 | TATTOO: 1140

#+GAR Grid Maker [AMF-CAF-XF]
+SAV Bismarck 5682
 SAV Abigale 0451

#GDAR Traveler 044 [AMF-CAF-XF]
 GAR Precision 2536 [AMC-NHF]
 #Schoenes Fix It 826 [AMF-CAF-XF]
 SAV Abigale 6062

BC 7022 Raven 7965 [AMF-CAF-XF]

BC Marathon 7022 [AMF-CAF-XF]
 OCC Blackbird 796F

OSU Empress 9170
 OSU Empress 6152

#SAV 8180 Traveler 004 [AMF-CAF-XF]
 +OSU Empress 0164

CED	EXPECTED PROGENY DIFFERENCES						\$ VALUES	
	BW	WW	YW	MILK	MARB	RE	\$W	\$B
+8	+1.7	+58	+88	+22	+27	+51	+35.70	+57.24

BIRTH WT.: 65 | ADJ. WNG. WT.: 782 / R 114

ADJ. %IMF 5.19 / R 110 | ADJ. REA 12.5

Top 3% \$W.

Calving ease!

42 PF 6EM3 Emblazon 4091 1040

CALVED: 1/20/11 | AAA: 16919136 | TATTOO: 1040

#OCC Emblazon 854E [CAF-M1F]
+Rito 6EM3 of 4L1 Emblazon [AMF-CAF-XF]
 +Rita 4L1 of 2536 208 [AMF-CAF-NHF]

#DHD Traveler 6807 [AMF-M1F-NHF]
 Dixie Erica of CH 1019
 #Bon View New Design 208 [CAC-AMF-NHF]
 GAR Precision 2536 [AMC-NHF]

#+WCC Special Design L309 [AMF-CAF-XF]

#Bon View New Design 878 [AMF-CAF-XF]
 N Bar Primrose 2424

PF L309 Pride 4091
 Bon View Pride 316

#Bon View Emulation EXT 473 [AMF-CAF-XF]
 Bon View Pride 664

CED	EXPECTED PROGENY DIFFERENCES						\$ VALUES	
	BW	WW	YW	MILK	MARB	RE	\$W	\$B
+12	+0.2	+55	+97	+19	+37	+14	+30.80	+49.40

BIRTH WT.: 77 | ADJ. WNG. WT.: 698 / R 107

ADJ. %IMF 4.68 / R 111 | ADJ. REA 11.4

Top 3% CED.

Calving ease!

43 PF Bismarck 9081 1041

CALVED: 1/20/11 | AAA: 16925832 | TATTOO: 1041

#+GAR Grid Maker [AMF-CAF-XF]
+SAV Bismarck 5682
 SAV Abigale 0451

#GDAR Traveler 044 [AMF-CAF-XF]
 GAR Precision 2536 [AMC-NHF]
 #Schoenes Fix It 826 [AMF-CAF-XF]
 SAV Abigale 6062

#CA Future Direction 5321 [AMC-NHC-XF]

#GAR Precision 1680 [AMC-NHC]
 CA Miss Power Fix 308 [AMF]

PF 5321 Lady Jaye 9081 [AMF-NHF]
 +BAAR USA Lady Jaye 486

#BAR EXT Traveler 205 [AMF-CAF-XF]
 CRA Lady Jaye 608 498 S Easy

CED	EXPECTED PROGENY DIFFERENCES						\$ VALUES	
	BW	WW	YW	MILK	MARB	RE	\$W	\$B
+0.0	+51	+88	+29	+40	+71		+33.11	+57.34

BIRTH WT.: 58 | ADJ. WNG. WT.: 679 / R 105

ADJ. %IMF 3.88 | ADJ. REA 14.7

Top 5% RE; 10% Milk.

Calving ease!

SPRING YEARLING BULLS

44 PF Credence 643T 1045

CALVED: 1/22/11 | AAA: +16924510 | TATTOO: 1045

#SS Objective T510 OT26 [AMF-CAF-XF]
+SQ Credence 67S [AMF-CAF-XF]
 +Rita 3540 of 021 Rito 111 [AMF]

#SS Traveler 6807 T510 [AMF-CAF-XF]
 SS Miss Rita R011 7R8 [AMF-NHF]
 #+Rito 111 of 2536 Rito 616 [AMF-M1F-NHF]
 Rita 021 of 7R11 RDA [AMF]

Connealy Onward [AMF-CAF-XF]

#Connealy Lead On [AMF-CAF-XF]

+Sitz Henrietta Pride 643T
 Sitz Henrietta Pride 81M

Altune of Conanga 6104
 #Sitz Value 7097 [AMF-CAF-XF]
 Sitz Henrietta Pride 1370

CED	EXPECTED PROGENY DIFFERENCES						\$ VALUES	
	BW	WW	YW	MILK	MARB	RE	\$W	\$B
+8	+2.0	+65	+111	+27	+47	+58	+38.98	+70.65

BIRTH WT.: 86 | ADJ. WNG. WT.: 831 / ET

ADJ. %IMF 4.28 | ADJ. REA 13.0

Top 1% \$W; 2% WW; 3% YW; 10% \$B, 15% RE.

Maternal brothers sell as Lots 2, 52, 60. Full brothers sell as Lots 53, 54, 61.

45 PF Hoover Dam 9093 1046

CALVED: 1/22/11 | AAA: 16920387 | TATTOO: 1046

SydGen CC&7 [AMF-CAF-NHF]
Hoover Dam [AMF-CAF-XF]
 #Erica of Ellston C124

#+SAF Connection [AMF-CAF-XF]
 SydGen Forever Lady 4087 [AMF]
 #TC Gridiron 258 [AMF-CAF-XF]
 Erica of Ellston V65

#SS Objective T510 OT26 [AMF-CAF-XF]

#SS Traveler 6807 T510 [AMF-CAF-XF]

+Basin Lucy 9093
 +Basin Lucy 3829 [AMF-NHF]

SS Miss Rita R011 7R8 [AMF-NHF]
 #CA Future Direction 5321 [AMC-NHC-XF]
 Basin Lucy 178E

CED	EXPECTED PROGENY DIFFERENCES						\$ VALUES	
	BW	WW	YW	MILK	MARB	RE	\$W	\$B
+3	+3.6	+54	+102	+33	+73	+82	+25.39	+71.36

BIRTH WT.: 84 | ADJ. WNG. WT.: 723

ADJ. %IMF 5.44 / R 118 | ADJ. REA 12.7

Top 2% Milk, RE; 10% YW, Marb, \$B.

46 PF Hoover Dam W1743 1047

CALVED: 1/22/11 | AAA: 16920389 | TATTOO: 1047

SydGen CC&7 [AMF-CAF-NHF]
Hoover Dam [AMF-CAF-XF]
 #Erica of Ellston C124

#+SAF Connection [AMF-CAF-XF]
 SydGen Forever Lady 4087 [AMF]
 #TC Gridiron 258 [AMF-CAF-XF]
 Erica of Ellston V65

#Basin Max 602C [AMF-CAF-XF]

#GT Maximum [AMF-CAF-XF]

Basin Eileen Lass W1743

#Basin Eline Erica 315U

#Basin Eileen Lass N137

#Bon View New Design 1407 [AMF-CAF-XF]
 Basin Eileen Lass 8581 [AMF-NHF]

CED	EXPECTED PROGENY DIFFERENCES						\$ VALUES	
	BW	WW	YW	MILK	MARB	RE	\$W	\$B
+3	+2.9	+50	+100	+28	+30	+45	+22.44	+50.58

BIRTH WT.: 82 | ADJ. WNG. WT.: 733 / R 104

ADJ. %IMF 5.24 / R 105 | ADJ. REA 11.5

Top 15% YW, Milk.



SAV Bismarck 5682 Several sons sell

SPRING YEARLING BULLS

47 PF Bismarck 9049 1048

CALVED: 1/22/11 | AAA: 16925831 | TATTOO: 1048

#+GAR Grid Maker [AMF-CAF-XF]

#GDAR Traveler 044 [AMF-CAF-XF]

+SAV Bismarck 5682

GAR Precision 2536 [AMC-NHF]

SAV Abigale 0451

#Schoenes Fix It 826 [AMF-CAF-XF]

SAV Abigale 6062

Riverbend Mile High 3718 [AMC-CAF-XF]

#Bon View New Design 1407 [AMF-CAF-XF]

PF 3718 Blackbird 9049 [AMF]

#+GAR Precision 1919 [AMC-NHF]

+PF 3000C Blackbird 7020

#Leachman Saughatchee 3000C [AMF-CAF-XF]

+PF 104 Blackbird 3164

CED	EXPECTED PROGENY DIFFERENCES						\$ VALUES	
	BW	WW	YW	MILK	MARB	RE	\$W	\$B
+8	+2.0	+51	+93	+27	+4.8	+4.8	+28.06	+64.41

BIRTH WT.: 68 | ADJ. WNG. WT.: 729 / R 104

ADJ. %IMF 5.62 / R 113 | ADJ. REA 10.8

48 PF Pendleton 9306 1051

CALVED: 1/22/11 | AAA: 16922408 | TATTOO: 1051

#SAV Final Answer 0035 [AMF-CAF-XF]

#Sitz Traveler 8180 [AMF-CAF-XF]

HARB Pendleton 765 JH [AMF-CAF-XF]

SAV Emulous 8145 [CAF]

#HARB Black Lady 375 JH

#HARB High Plains 975 JH [AMF-CAF-XF]

#HARB Black Lady 073 JH

#B/R New Design 036 [AMF-CAF-XF]

#VDAR New Trend 315 [AMF-CAF-XF]

PF New Design 9306 [AMF]

GAR Precision 2536 [AMC-NHF]

B/R Blackcap Empress 76

#GAR Precision 1680 [AMC-NHC]

+GAR EXT 2104

CED	EXPECTED PROGENY DIFFERENCES						\$ VALUES	
	BW	WW	YW	MILK	MARB	RE	\$W	\$B
+1.3	+55	+99	+31	+2.4	+0.9		+30.92	+49.01

BIRTH WT.: 72 | ADJ. WNG. WT.: 701 / R 102

ADJ. %IMF 4.79 / R 101 | ADJ. REA 12.7 / R 101.

Top 4% Milk; 15% YW.

49 PF Worldwide 9028 1052 [CAF]

CALVED: 1/22/11 | AAA: 16912192 | TATTOO: 1052

+EXAR Spartan 6225 [AMF-CAF-XF]

EXAR Lutton 1831 [AMF-CAF-XF]

EXAR Worldwide 9600B [CAF-D2F-M1F]

WK Winnie 7305

#Dixie Erica of RR 6289

+EXAR Merit 216

Dixie Erica of RR 9769

+SAV 5175 Bando 4597 [CAC-AMF-XF]

#+SAF 598 Bando 5175 [CAC-AMF]

PF 4597 Bardolena 9028 [CAF]

+Champion Hill Blossom 1611 [NHC-AMF]

PF 4106 Bardolena 7110 [AMF-NHF]

+PF MCW SBP Precision 4106

+PF 095 Bardolena 5224

CED	EXPECTED PROGENY DIFFERENCES						\$ VALUES	
	BW	WW	YW	MILK	MARB	RE	\$W	\$B
+7	+2.5	+59	+97	+26	+1.31	+1.31	+31.92	+58.89

BIRTH WT.: NA | ADJ. WNG. WT.: 830 / R 114

ADJ. %IMF 3.79 | ADJ. REA 13.0 / R 101

Top 10% WW; 15% Milk.

50 PF Credence 9036 1055

CALVED: 1/23/11 | AAA: 16924487 | TATTOO: 1055

#SS Objective T510 OT26 [AMF-CAF-XF]

#SS Traveler 6807 T510 [AMF-CAF-XF]

+SQ Credence 67S [AMF-CAF-XF]

SS Miss Rita R011 7R8 [AMF-NHF]

+Rita 3540 of 021 Rito 111 [AMF]

#+Rito 111 of 2536 Rito 616 [AMF-M1F-NHF]

Rita 021 of 7R11 RDA [AMF]

Riverbend Mile High 3718 [AMC-CAF-XF]

#Bon View New Design 1407 [AMF-CAF-XF]

PF 3718 Prosperity 9036 [AMF-CAF]

#+GAR Precision 1919 [AMC-NHF]

Limestone Prosperity T302

#+Rito 112 of 2536 Rito 616 [AMF-CAF-XF]

G 13 BAAR Prosperity 4096

CED	EXPECTED PROGENY DIFFERENCES						\$ VALUES	
	BW	WW	YW	MILK	MARB	RE	\$W	\$B
+7	+1.7	+58	+100	+28	+1.55	+1.16	+32.03	+38.76

BIRTH WT.: 69 | ADJ. WNG. WT.: 749 / R 107

ADJ. %IMF 6.84 / R 137 | ADJ. REA 10.9

Top 10% WW; 15% YW, Milk.

SPRING YEARLING BULLS



SydGen CC&7 His sons and grandsons sell

51 PF CC&7 5007 1059

CALVED: 1/24/11 | AAA: 16924457 | TATTOO: 1059

#+SAF Connection [AMF-CAF-XF]

#+SVF GDAR 216 LTD

SydGen CC&7 [AMF-CAF-NHF]

+SAF Royal Queen 5084 [CAF]

SydGen Forever Lady 4087 [AMF]

SydGen 1407 Corona 2016 [AMC-CAF-XF]

+SAF Forever Lady 8292

#TC Freedom 104 [AMF-CAF-XF]

#Connealy Forefront [AMF-CAF-XF]

PF 104 Bardolena 5007 [NHF]

#TC Ruby 9095 [CAF]

+PF E161 Bardolena 3143 [NHC-AMF]

#Twin Valley Precision E161 [NHC-AMF-XF]

GK Betsy Bardolena 323A

CED	EXPECTED PROGENY DIFFERENCES						\$ VALUES	
	BW	WW	YW	MILK	MARB	RE	\$W	\$B
+0	+3.4	+57	+107	+39	+1.35	+1.68	+26.51	+70.74

BIRTH WT.: 86 | ADJ. WNG. WT.: 787 / R 108

ADJ. %IMF 5.80 / R 115 | ADJ. REA 14.7 / R 103

Top 1% Milk; 5% YW; 10% WW, RE, \$B.

52 PF 6EM3 643T 1061

CALVED: 1/25/11 | AAA: +16919102 | TATTOO: 1061

#+OCC Emblazon 854E [CAF-M1F]

#DHD Traveler 6807 [AMF-M1F-NHF]

+Rito 6EM3 of 4L1 Emblazon [AMF-CAF-XF]

Dixie Erica of CH 1019

+Rita 4L1 of 2536 208 [AMF-CAF-NHF]

#Bon View New Design 208 [CAC-AMF-NHF]

GAR Precision 2536 [AMC-NHF]

Connealy Onward [AMF-CAF-XF]

#Connealy Lead On [AMF-CAF-XF]

+Sitz Henrietta Pride 643T

Altune of Conanga 6104

Sitz Henrietta Pride 81M

#Sitz Value 7097 [AMF-CAF-XF]

Sitz Henrietta Pride 1370

CED	EXPECTED PROGENY DIFFERENCES						\$ VALUES	
	BW	WW	YW	MILK	MARB	RE	\$W	\$B
+9	+1.4	+62	+111	+23	+1.24	+1.57	+37.27	+51.03

BIRTH WT.: 68 | ADJ. WNG. WT.: 691 / ET

ADJ. %IMF 4.63 | ADJ. REA 11.6

Top 2% \$W; 3% WW, YW; 15% CED, RE.

Maternal brothers sell as Lots 2, 44, 53, 54, 61. Full brother sells as Lot 60.

53 PF Credence 643T 1066

CALVED: 1/26/11 | AAA: +16924512 | TATTOO: 1066

#SS Objective T510 OT26 [AMF-CAF-XF]

#SS Traveler 6807 T510 [AMF-CAF-XF]

+SQ Credence 67S [AMF-CAF-XF]

SS Miss Rita R011 7R8 [AMF-NHF]

+Rita 3540 of 021 Rito 111 [AMF]

#+Rito 111 of 2536 Rito 616 [AMF-M1F-NHF]

Rita 021 of 7R11 RDA [AMF]

Connealy Onward [AMF-CAF-XF]

#Connealy Lead On [AMF-CAF-XF]

+Sitz Henrietta Pride 643T

Altune of Conanga 6104

Sitz Henrietta Pride 81M

#Sitz Value 7097 [AMF-CAF-XF]

Sitz Henrietta Pride 1370

CED	EXPECTED PROGENY DIFFERENCES						\$ VALUES	
	BW	WW	YW	MILK	MARB	RE	\$W	\$B
+8	+2.0	+65	+111	+27	+1.44	+1.53	+38.98	+60.07

BIRTH WT.: 65 | ADJ. WNG. WT.: 659 / ET

ADJ. %IMF 4.04 | ADJ. REA 12.3

Top 1% \$W; 2% WW; 3% YW.

Maternal brothers sell as Lots 2, 44, 52, 60. Full brothers sell as 54 and 61.

SPRING YEARLING BULLS



54 | **PF Credence 643T 1069**
 CALVED: 1/27/11 | AAA: +16924515 | TATTOO: 1069
 #SS Objective T510 OT26 [AMF-CAF-XF] #SS Traveler 6807 T510 [AMF-CAF-XF]
 #SQ Credence 67S [AMF-CAF-XF] SS Miss Rita R011 7R8 [AMF-NHF]
 +Rita 3540 of 021 Rito 111 [AMF] #+Rito 111 of 2536 Rito 616 [AMF-M1F-NHF]
 Rita 021 of 7R11 RDA [AMF] #Connealy Lead On [AMF-CAF-XF]
 Connealy Onward [AMF-CAF-XF] Altune of Conanga 6104
 #Sitz Henrietta Pride 643T #Sitz Value 7097 [AMF-CAF-XF]
 Sitz Henrietta Pride 81M Sitz Henrietta Pride 1370

CED	EXPECTED PROGENY DIFFERENCES						\$ VALUES	
	BW	WW	YW	MILK	MARB	RE	\$W	\$B
+8	+2.0	+65	+111	+27	+4.6	+6.2	+38.98	+66.21

BIRTH WT.: 71 | ADJ. WNG. WT.: 774 / ET
 ADJ. %IMF 4.23 | ADJ. REA 13.6 / R 103
 Top 1% \$W; 2% WW; 3% YW; 10% RE.

Maternal brothers sell as Lots 2, 44, 52, 60. Full brothers sell as 53 and 61.

55 | **PF Bextor 9305 1072**
 CALVED: 1/27/11 | AAA: 16921346 | TATTOO: 1072
 #BAR EXT Traveler 205 [AMF-CAF-XF] #N Bar Emulation EXT [AMF-CAF-XF]
 #CRA Bextor 872 5205 608 [AMF-CAF-XF] #BAR Queen Traveler 3015
 CRA Lady Jaye 608 498 S Easy #+GAR Sleep Easy 1009 [AMF-CAF-XF]
 HHF 917 Lady 975 498 #VDAR New Trend 315 [AMF-CAF-XF]
 #B/R New Design 036 [AMF-CAF-XF] B/R Blackcap Empress 76
 #PF New Design 9305 [AMF] #GAR Precision 1680 [AMC-NHC]
 GAR Precision 2536 [AMC-NHF] +GAR EXT 2104

CED	EXPECTED PROGENY DIFFERENCES						\$ VALUES	
	BW	WW	YW	MILK	MARB	RE	\$W	\$B
+2.0	+51	+92	+30	+3.7	+2.9		+28.79	+49.11

BIRTH WT.: 71 | ADJ. WNG. WT.: 679
 ADJ. %IMF 5.15 / R 109 | ADJ. REA 11.9
 Top 10% Milk.

56 | **PF Credence 9303 1075**
 CALVED: 1/28/11 | AAA: 16924485 | TATTOO: 1075
 #SS Objective T510 OT26 [AMF-CAF-XF] #SS Traveler 6807 T510 [AMF-CAF-XF]
 #SQ Credence 67S [AMF-CAF-XF] SS Miss Rita R011 7R8 [AMF-NHF]
 +Rita 3540 of 021 Rito 111 [AMF] #+Rito 111 of 2536 Rito 616 [AMF-M1F-NHF]
 Rita 021 of 7R11 RDA [AMF] #VDAR New Trend 315 [AMF-CAF-XF]
 #B/R New Design 036 [AMF-CAF-XF] B/R Blackcap Empress 76
 #PF New Design 9303 [AMF] #GAR Precision 1680 [AMC-NHC]
 GAR Precision 2536 [AMC-NHF] +GAR EXT 2104

CED	EXPECTED PROGENY DIFFERENCES						\$ VALUES	
	BW	WW	YW	MILK	MARB	RE	\$W	\$B
+7	+2.5	+52	+91	+25	+3.8	+3.7	+28.21	+39.55

BIRTH WT.: 76 | ADJ. WNG. WT.: 671
 ADJ. %IMF 5.09 / R 102 | ADJ. REA 14.2 / R 114

SPRING YEARLING BULLS

57 | **PF Iron Mountain 9909 1076**
 CALVED: 1/29/11 | AAA: 16924526 | TATTOO: 1076
 #TC Gridiron 258 [AMF-CAF-XF] #+GAR Grid Maker [AMF-CAF-XF]
 SAV Iron Mountain 8066 [AMF-CAF-XF] #TC Blackbird 7049
 SAV Madame Pride 3249 [CAF] #SAV 8180 Traveler 004 [AMF-CAF-XF]
 SAV Madame Pride 8264
 Basin Payweight 5097 [CAF] Basin Payweight 176R [AMF-CAF-XF]
 Basin Lass R358
 #Bon View New Design 1407 [AMF-CAF-XF]
 RR Blackbird 3810

CED	EXPECTED PROGENY DIFFERENCES						\$ VALUES	
	BW	WW	YW	MILK	MARB	RE	\$W	\$B
+9	+1.2	+54	+99	+21	+4.0	+0.9	+28.59	+39.31

BIRTH WT.: 60 | ADJ. WNG. WT.: 668
 ADJ. %IMF 6.57 / R 132 | ADJ. REA 11.5
 Top 15% CED, YW.
Calving ease!

58 | **PF EXT S309 1202**
 CALVED: 1/29/11 | AAA: +16937319 | TATTOO: 1202
 #Emulation N Bar 5522 #Emulation 31 [DWF-RDF]
 #N Bar Emulation EXT [AMF-CAF-XF] Ankony 8F78 Lass 8F275
 N Bar Primrose 2424 #Emulation 31 [DWF-RDF]
 Primrose N Bar 9962
 #+Rito 112 of 2536 Rito 616 [AMF-CAF-XF] #Rito 616 of 4B20 6807 [AMF-CAF-XF]
 #Limestone Blackcap S309 [AMF-NHF] GAR Precision 2536 [AMC-NHF]
 +GAR 044 Traveler 2328 [AMF-NHF] #GDAR Traveler 044 [AMF-CAF-XF]
 GAR Precision 2536 [AMC-NHF]

CED	EXPECTED PROGENY DIFFERENCES						\$ VALUES	
	BW	WW	YW	MILK	MARB	RE	\$W	\$B
+5	+2.1	+49	+86	+21	+3.5	+2.2	+28.32	+52.12

BIRTH WT.: 73 | ADJ. WNG. WT.: 735 / ET
 ADJ. %IMF 4.87 / R 107 | ADJ. REA 12.7
 Full brother sells as Lot 79.

59 | **PF Upward 7784 1203**
 CALVED: 1/31/11 | AAA: +16919192 | TATTOO: 1203
 Connealy Onward [AMF-CAF-XF] #Connealy Lead On [AMF-CAF-XF]
 Sitz Upward 307R [AMF-CAF-XF] Altune of Conanga 6104
 Sitz Henrietta Pride 81M #Sitz Value 7097 [AMF-CAF-XF]
 Sitz Henrietta Pride 1370
 #DHD Traveler 6807 [AMF-M1F-NHF] #QAS Traveler 23-4 [AMF-CAF-XF]
 #EXAR Blackcap 7784 #Bemindful Maid DHD 0807
 +A Plus SPT Blackcap 3168 [AMF-NHF] #+Leachman Right Time
 #GAR Scotch Cap 867

CED	EXPECTED PROGENY DIFFERENCES						\$ VALUES	
	BW	WW	YW	MILK	MARB	RE	\$W	\$B
+5	+2.5	+55	+103	+29	+2.3	+4.7	+31.71	+65.26

BIRTH WT.: 90 | ADJ. WNG. WT.: 645 / ET
 ADJ. %IMF 4.29 | ADJ. REA 14.0 / R 101
 Top 10% YW and Milk.
 Full brothers sell as Lots 62 and 68.

60 | **PF Emblazon 643T 1205**
 CALVED: 2/2/11 | AAA: +16919106 | TATTOO: 1205
 #+OCC Emblazon 854E [CAF-M1F] #DHD Traveler 6807 [AMF-M1F-NHF]
 #Rito 6EM3 of 4L1 Emblazon [AMF-CAF-XF] Dixie Erica of CH 1019
 +Rita 4L1 of 2536 208 [AMF-CAF-NHF] #Bon View New Design 208 [CAC-AMF-NHF]
 GAR Precision 2536 [AMC-NHF]
 Connealy Onward [AMF-CAF-XF] #Connealy Lead On [AMF-CAF-XF]
 #Sitz Henrietta Pride 643T Altune of Conanga 6104
 Sitz Henrietta Pride 81M #Sitz Value 7097 [AMF-CAF-XF]
 Sitz Henrietta Pride 1370

CED	EXPECTED PROGENY DIFFERENCES						\$ VALUES	
	BW	WW	YW	MILK	MARB	RE	\$W	\$B
+9	+1.4	+62	+111	+23	+1.9	+7.4	+37.27	+49.57

BIRTH WT.: 90 | ADJ. WNG. WT.: 607 / ET
 ADJ. %IMF 4.14 | ADJ. REA 14.8 / R 106
 Top 2% \$W; 3% WW, YW; 4% RE; 15% CED.

Maternal brothers sell as Lots 2, 44, 53, 54, 61. Full brother sells as Lot 52.

SPRING YEARLING BULLS

61 PF Credence 643T 1206

CALVED: 2/3/11 | AAA: +16924517 | TATTOO: 1206

#SS Objective T510 OT26 [AMF-CAF-XF]
+SQ Credence 67S [AMF-CAF-XF]
 +Rita 3540 of 021 Rito 111 [AMF]

#SS Traveler 6807 T510 [AMF-CAF-XF]
 SS Miss Rita R011 7R8 [AMF-NHF]
 #+Rito 111 of 2536 Rito 616 [AMF-M1F-NHF]
 Rita 021 of 7R11 RDA [AMF]

Connealy Onward [AMF-CAF-XF]
+Sitz Henrietta Pride 643T
 Sitz Henrietta Pride 81M

#Connealy Lead On [AMF-CAF-XF]
 Altune of Conanga 6104
 #Sitz Value 7097 [AMF-CAF-XF]
 Sitz Henrietta Pride 1370

EXPECTED PROGENY DIFFERENCES							\$ VALUES	
CED	BW	WW	YW	MILK	MARB	RE	\$W	\$B
+1.8	+2.0	+1.65	+1.11	+1.27	+1.47	+1.51	+38.98	+67.24

BIRTH WT.: 90 | ADJ. WNG. WT.: 724 / ET

ADJ. %IMF 4.33 | ADJ. REA 12.7

Top 1% \$W; 2% WW; 3% YW.

Maternal brothers sell as Lots 2, 44, 52, 60. Full brothers sell as 53 and 54.

62 PF Upward 7784 1207

CALVED: 2/3/11 | AAA: +16919195 | TATTOO: 1207

Connealy Onward [AMF-CAF-XF]
Sitz Upward 307R [AMF-CAF-XF]
 Sitz Henrietta Pride 81M

#Connealy Lead On [AMF-CAF-XF]
 Altune of Conanga 6104
 #Sitz Value 7097 [AMF-CAF-XF]
 Sitz Henrietta Pride 1370

#DHD Traveler 6807 [AMF-M1F-NHF]
+EXAR Blackcap 7784
 +A Plus SPT Blackcap 3168 [AMF-NHF]

#QAS Traveler 23-4 [AMF-CAF-XF]
 #Bemindful Maid DHD 0807
 #+Leachman Right Time
 #GAR Scotch Cap 867

EXPECTED PROGENY DIFFERENCES							\$ VALUES	
CED	BW	WW	YW	MILK	MARB	RE	\$W	\$B
+1.5	+2.5	+1.55	+1.103	+1.29	+1.23	+1.36	+31.71	+61.59

BIRTH WT.: 89 | ADJ. WNG. WT.: 620 / ET

ADJ. %IMF 4.33 | ADJ. REA 12.4

Top 10% YW, Milk; 15% \$W.

Full brothers sell as Lots 59 and 68.

63 PF Bextor 9302 1081

CALVED: 2/4/11 | AAA: 16921347 | TATTOO: 1081

#BAR EXT Traveler 205 [AMF-CAF-XF]
#CRA Bextor 872 5205 608 [AMF-CAF-XF]
 CRA Lady Jaye 608 498 S Easy

#N Bar Emulation EXT [AMF-CAF-XF]
 #BAR Queen Traveler 3015
 #+GAR Sleep Easy 1009 [AMF-CAF-XF]
 HHF 917 Lady 975 498

#GAR Predestined [AMF-CAF-XF]
+Monarch Blackcap 9302 [AMF-NHF]
 +VAR Blackcap 6204 [AMC-NHC]

#B/R New Design 036 [AMF-CAF-XF]
 #+GAR EXT 4206
 #CA Future Direction 5321 [AMC-NHC-XF]
 +GAR 044 Traveler 2328 [AMF-NHF]

EXPECTED PROGENY DIFFERENCES							\$ VALUES	
CED	BW	WW	YW	MILK	MARB	RE	\$W	\$B
+1.8	+2.1	+4.8	+8.8	+2.9	+1.60	+1.74	+29.40	+61.76

BIRTH WT.: 64 | ADJ. WNG. WT.: 647

ADJ. %IMF 4.71 / R 100 | ADJ. REA 14.2 / R 113

Top 4% RE; 10% Milk.

64 PF 6EM3 Emblazon 501 1082

CALVED: 2/5/11 | AAA: 16919109 | TATTOO: 1082

#+OCC Emblazon 854E [CAF-M1F]
+Rito 6EM3 of 4L1 Emblazon [AMF-CAF-XF]
 +Rita 4L1 of 2536 208 [AMF-CAF-NHF]

#DHD Traveler 6807 [AMF-M1F-NHF]
 Dixie Erica of CH 1019
 #Bon View New Design 208 [CAC-AMF-NHF]
 GAR Precision 2536 [AMC-NHF]

#SAV 8180 Traveler 004 [AMF-CAF-XF]
JC Blackcap Annie 501
 JC Blackcap Annie 306

#Sitz Traveler 8180 [AMF-CAF-XF]
 +Boyd Forever Lady 8003
 #Bon View New Design 878 [AMF-CAF-XF]
 JC Blackcap Annie 821

EXPECTED PROGENY DIFFERENCES							\$ VALUES	
CED	BW	WW	YW	MILK	MARB	RE	\$W	\$B
+1.2	-0.6	+5.9	+10.5	+1.9	+1.16	+1.51	+31.81	+48.29

BIRTH WT.: 70 | ADJ. WNG. WT.: 679 / R 104

ADJ. %IMF 3.81 | ADJ. REA 14.2 / R 113

Top 3% CED; 10% WW, YW; 15% \$W.

SPRING YEARLING BULLS

65 PF Bextor 8100 1182

CALVED: 2/5/11 | AAA: +16921351 | TATTOO: 1182

#BAR EXT Traveler 205 [AMF-CAF-XF]
#CRA Bextor 872 5205 608 [AMF-CAF-XF]
 CRA Lady Jaye 608 498 S Easy

#N Bar Emulation EXT [AMF-CAF-XF]
 #BAR Queen Traveler 3015
 #+GAR Sleep Easy 1009 [AMF-CAF-XF]
 HHF 917 Lady 975 498

#SS Objective T510 OT26 [AMF-CAF-XF]
EXAR 608 8100 [AMF-NHF]
 +BA 2779 X 5899 608 [AMF-NHF]

#SS Traveler 6807 T510 [AMF-CAF-XF]
 SS Miss Rita R011 7R8 [AMF-NHF]
 #GAR Predestined [AMF-CAF-XF]
 +GAR 6148 Emulation 2799

EXPECTED PROGENY DIFFERENCES							\$ VALUES	
CED	BW	WW	YW	MILK	MARB	RE	\$W	\$B
+1.7	+2.4	+1.58	+1.107	+1.33	+1.65	+1.64	+34.48	+71.86

BIRTH WT.: 98 | ADJ. WNG. WT.: 582 / ET

ADJ. %IMF 4.44 / R 106 | ADJ. REA 12.1 / R 106

Top 2% Milk; 5% YW; 10% WW, RE, \$B; 15% Marb.

Full brother sells as Lot 8. Maternal brothers sell as Lots 71 and 73.

66 PF Emblazon 8115 1084 ofSB

CALVED: 2/6/11 | AAA: 16919084 | TATTOO: 1084

#+OCC Emblazon 854E [CAF-M1F]
+Rito 6EM3 of 4L1 Emblazon [AMF-CAF-XF]
 +Rita 4L1 of 2536 208 [AMF-CAF-NHF]

#DHD Traveler 6807 [AMF-M1F-NHF]
 Dixie Erica of CH 1019
 #Bon View New Design 208 [CAC-AMF-NHF]
 GAR Precision 2536 [AMC-NHF]

+RR 616 5769
PF 5769 Forever Lady 8115 ofSB [CAF]
 Silveiras Forever Lady 6007 [CAF]

#Rito 616 of 4B20 6807 [AMF-CAF-XF]
 +HA 4167 Lady 1026 [AMF]
 #Bon View New Design 208 [CAC-AMF-NHF]
 Vian Forever Lady 0101

EXPECTED PROGENY DIFFERENCES							\$ VALUES	
CED	BW	WW	YW	MILK	MARB	RE	\$W	\$B
+1.0	+0.6	+4.8	+8.9	+2.3	+1.37	+1.47	+28.55	+46.31

BIRTH WT.: 74 | ADJ. WNG. WT.: 685

ADJ. %IMF NA | ADJ. REA NA

Top 10% CED.

Calving ease!

67 PF Right Time P512 1214

CALVED: 2/6/11 | AAA: +16921341 | TATTOO: 1214

#N Bar Emulation EXT [AMF-CAF-XF]
#+Leachman Right Time
 Leachman Erica 0025

#Emulation N Bar 5522
 N Bar Primrose 2424
 #Tehama Bando 155 [AMF-CAF-XF]
 Leachman Erica 8058

#Bon View New Design 1407 [AMF-CAF-XF]
+FV P512 of Ideal 4465
 +Ideal 4465 of 6807 4286 [AMF-NHF]

#B/R New Design 036 [AMF-CAF-XF]
 Bon View Pride 664
 #DHD Traveler 6807 [AMF-M1F-NHF]
 EE 4286 of Ideal 2240 1254

EXPECTED PROGENY DIFFERENCES							\$ VALUES	
CED	BW	WW	YW	MILK	MARB	RE	\$W	\$B
+1.6	+1.7	+1.43	+1.82	+1.24	+1.30	+1.40	+25.64	+64.61

BIRTH WT.: 90 | ADJ. WNG. WT.: 644 / ET

ADJ. %IMF 4.67 / R 103 | ADJ. REA 15.7 / R 113

68 PF Upward 7784 1215

CALVED: 2/6/11 | AAA: +16919201 | TATTOO: 1215

Connealy Onward [AMF-CAF-XF]
Sitz Upward 307R [AMF-CAF-XF]
 Sitz Henrietta Pride 81M

#Connealy Lead On [AMF-CAF-XF]
 Altune of Conanga 6104
 #Sitz Value 7097 [AMF-CAF-XF]
 Sitz Henrietta Pride 1370

#DHD Traveler 6807 [AMF-M1F-NHF]
+EXAR Blackcap 7784
 +A Plus SPT Blackcap 3168 [AMF-NHF]

#QAS Traveler 23-4 [AMF-CAF-XF]
 #Bemindful Maid DHD 0807
 #+Leachman Right Time
 #GAR Scotch Cap 867

EXPECTED PROGENY DIFFERENCES							\$ VALUES	
CED	BW	WW	YW	MILK	MARB	RE	\$W	\$B
+1.5	+2.5	+1.55	+1.103	+1.29	+1.20	+1.45	+31.71	+62.30

BIRTH WT.: 90 | ADJ. WNG. WT.: 545 / ET

ADJ. %IMF NA | ADJ. REA NA

Top 10% YW, Milk; 15% \$W.

Full brothers sell as Lots 59 and 62.

Calving ease!

SPRING YEARLING BULLS



Rito 6EM3 of 4L1 Emblazon Several sons sell

69 PF 6EM3 1086 of A Cross

CALVED: 2/7/11 | AAA: 16929858 | TATTOO: 1086

- #+OCC Emblazon 854E [CAF-M1F] #DHD Traveler 6807 [AMF-M1F-NHF]
- #Rito 6EM3 of 4L1 Emblazon [AMF-CAF-XF] Dixie Erica of CH 1019
- +Rita 4L1 of 2536 208 [AMF-CAF-NHF] #Bon View New Design 208 [CAC-AMF-NHF]
- #SAV Final Answer 0035 [AMF-CAF-XF] #Sitz Traveler 8180 [AMF-CAF-XF]
- SMR Ever Entense 9100** #SAV Emulous 8145 [CAF]
- +C&H Ever Entense 4011 [AMF] #B/R New Design 323
- +Shadybrook Ever Entense 491G

EXPECTED PROGENY DIFFERENCES							\$ VALUES	
CED	BW	WW	YW	MILK	MARB	RE	\$W	\$B
+12	-0.3	+48	+90	+23	+0.03	+4.44	+29.12	+31.92

BIRTH WT.: 70 | ADJ. WNG. WT.: 701 / R 100

ADJ. %IMF 4.16 | ADJ. REA 13.9 / R 111

Top 3% CED; 10% BW.

Calving ease!

70 PF Upward 116 1087

CALVED: 2/7/11 | AAA: 16919207 | TATTOO: 1087

- Connealy Onward [AMF-CAF-XF] #Connealy Lead On [AMF-CAF-XF]
- Sitz Upward 307R** [AMF-CAF-XF] Altune of Conanga 6104
- Sitz Henrietta Pride 81M #Sitz Value 7097 [AMF-CAF-XF]
- #N Bar Emulation EXT [AMF-CAF-XF] Sitz Henrietta Pride 1370
- +B&M Forever Lady 116 [NHF] #Emulation N Bar 5522
- +B&M Foreverlady 092 N Bar Primrose 2424
- #AAR New Trend
- B&M Forever Lady 294 [AMF-NHF]

EXPECTED PROGENY DIFFERENCES							\$ VALUES	
CED	BW	WW	YW	MILK	MARB	RE	\$W	\$B
+5	+2.7	+52	+102	+34	+0.27	+3.35	+24.24	+63.63

BIRTH WT.: 60 | ADJ. WNG. WT.: 620

ADJ. %IMF 3.80 | ADJ. REA 11.7

Top 2% Milk; 15% YW.

71 PF Complete 8100 1208

CALVED: 2/7/11 | AAA: +16915772 | TATTOO: 1208

- #CF Right Design 1802 [AMF-CAF-XF] #Bon View New Design 1407 [AMF-CAF-XF]
- Summitcrest Complete 1P55** [AMF-CAF-XF] #+Vision HF Blackcap 0015
- Summitcrest Elba 1M17 #Vermilion Dateline 7078 [AMF-CAF-XF]
- #SS Objective T510 OT26 [AMF-CAF-XF] Summitcrest Elba 1F43
- EXAR 608 8100** [AMF-NHF] #SS Traveler 6807 T510 [AMF-CAF-XF]
- +BA 2779 X 5899 608 [AMF-NHF] SS Miss Rita R011 7R8 [AMF-NHF]
- #GAR Predestined [AMF-CAF-XF]
- +GAR 6148 Emulation 2779

EXPECTED PROGENY DIFFERENCES							\$ VALUES	
CED	BW	WW	YW	MILK	MARB	RE	\$W	\$B
+4	+3.0	+59	+110	+33	+0.63	+0.92	+32.00	+84.14

BIRTH WT.: 90 | ADJ. WNG. WT.: 685 / ET

ADJ. %IMF 5.19 / R 114 | ADJ. REA 14.9 / R 107

Top 1% RE, \$B; 2% Milk; 3% YW; 10% WW; 15% \$W.

Maternal brothers sell as Lots 8 and 65. Full brother sells as Lot 73.

SPRING YEARLING BULLS

72 PF Bismarck 9059 1094

CALVED: 2/9/11 | AAA: 16925833 | TATTOO: 1094

- #+GAR Grid Maker [AMF-CAF-XF] #GDAR Traveler 044 [AMF-CAF-XF]
- +SAV Bismarck 5682** GAR Precision 2536 [AMC-NHF]
- SAV Abigale 0451 #Schoenes Fix It 826 [AMF-CAF-XF]
- SAV Abigale 6062
- SAV Net Worth 4200 [AMF-CAF-XF] #SAV 8180 Traveler 004 [AMF-CAF-XF]
- PF 4200 Rita 9059** +SAV May 2410
- +Whitestone Rita 903T [NHF] #+B/R New Frontier 095 [AMF-CAF-XF]
- +EF Rita 0203 [AMF-NHF]

EXPECTED PROGENY DIFFERENCES							\$ VALUES	
CED	BW	WW	YW	MILK	MARB	RE	\$W	\$B
+10	+1.1	+56	+99	+26	+0.26	+0.54	+31.42	+54.09

BIRTH WT.: 64 | ADJ. WNG. WT.: 721

ADJ. %IMF 4.31 | ADJ. REA 13.8

Top 10% CED; 15% WW, YW.

Calving ease!

73 PF Complete 8100 1210

CALVED: 2/10/11 | AAA: +16921395 | TATTOO: 1210

- #CF Right Design 1802 [AMF-CAF-XF] #Bon View New Design 1407 [AMF-CAF-XF]
- Summitcrest Complete 1P55** [AMF-CAF-XF] #+Vision HF Blackcap 0015
- Summitcrest Elba 1M17 #Vermilion Dateline 7078 [AMF-CAF-XF]
- #SS Objective T510 OT26 [AMF-CAF-XF] Summitcrest Elba 1F43
- EXAR 608 8100** [AMF-NHF] #SS Traveler 6807 T510 [AMF-CAF-XF]
- +BA 2779 X 5899 608 [AMF-NHF] SS Miss Rita R011 7R8 [AMF-NHF]
- #GAR Predestined [AMF-CAF-XF]
- +GAR 6148 Emulation 2779

EXPECTED PROGENY DIFFERENCES							\$ VALUES	
CED	BW	WW	YW	MILK	MARB	RE	\$W	\$B
+4	+3.0	+59	+110	+33	+0.63	+0.87	+32.00	+82.41

BIRTH WT.: 90 | ADJ. WNG. WT.: 666 / ET

ADJ. %IMF NA | ADJ. REA NA

Top 1% RE, \$B; 2% Milk; 3% YW; 10% WW; 15% \$W.

Maternal brothers sell as Lots 8 and 65. Full brother sells as Lot 71.

74 PF Bextor 8530 1097

CALVED: 2/11/11 | AAA: 16921350 | TATTOO: 1097

- #BAR EXT Traveler 205 [AMF-CAF-XF] #N Bar Emulation EXT [AMF-CAF-XF]
- #CRA Bextor 872 5205 608** [AMF-CAF-XF] #BAR Queen Traveler 3015
- CRA Lady Jaye 608 498 S Easy #+GAR Sleep Easy 1009 [AMF-CAF-XF]
- #GAR Predestined [AMF-CAF-XF] HHF 917 Lady 975 498
- PF 5899 Lady Rito 8530** #B/R New Design 036 [AMF-CAF-XF]
- TF Lady Rito 4712 #+GAR EXT 4206
- #BR Midland [AMF-CAF-XF]
- ALC Rito Lady 8172 [AMF]

EXPECTED PROGENY DIFFERENCES							\$ VALUES	
CED	BW	WW	YW	MILK	MARB	RE	\$W	\$B
+11	+0.5	+48	+88	+27	+0.65	+0.57	+29.76	+63.29

BIRTH WT.: 60 | ADJ. WNG. WT.: 657

ADJ. %IMF NA | ADJ. REA NA

Top 10% CED; 15% Milk, Marb, RE.

Calving ease!

75 PF Bismarck 8063 1099

CALVED: 2/12/11 | AAA: 16925838 | TATTOO: 1099

- #+GAR Grid Maker [AMF-CAF-XF] #GDAR Traveler 044 [AMF-CAF-XF]
- +SAV Bismarck 5682** GAR Precision 2536 [AMC-NHF]
- SAV Abigale 0451 #Schoenes Fix It 826 [AMF-CAF-XF]
- SAV Abigale 6062
- #GAR Predestined [AMF-CAF-XF] #B/R New Design 036 [AMF-CAF-XF]
- +PF 5899 Blackbird 8063** #+GAR EXT 4206
- +EXAR Blackbird 3392 [AMF-NHF] #BR Midland [AMF-CAF-XF]
- PAF Blackbird 6665

EXPECTED PROGENY DIFFERENCES							\$ VALUES	
CED	BW	WW	YW	MILK	MARB	RE	\$W	\$B
+9	+1.4	+52	+93	+25	+0.49	+0.73	+29.90	+61.84

BIRTH WT.: 65 | ADJ. WNG. WT.: 663 / R 102

ADJ. %IMF 4.60 / R 109 | ADJ. REA 13.0 / R 103

Top 4% RE; 15% CED.

Calving ease!

SPRING YEARLING BULLS



MCS

Lot 76

76 PF CC&7 71599 1103

CALVED: 2/14/11 | AAA: +16924430 | TATTOO: 1103

- #+SAF Connection [AMF-CAF-XF]
- SydGen CC&7 [AMF-CAF-NHF]
- SydGen Forever Lady 4087 [AMF]
- #GAR Predestined [AMF-CAF-XF]
- +EXAR Rita 71599 [NHF]
- +Rita 1197 of 2536 Rito 616 [AMF-NHF]
- #+SVF GDAR 216 LTD
- +SAF Royal Queen 5084 [CAF]
- SydGen 1407 Corona 2016 [AMC-CAF-XF]
- +SAF Forever Lady 8292
- #B/R New Design 036 [AMF-CAF-XF]
- +GAR EXT 4206
- #Rito 616 of 4B20 6807 [AMF-CAF-XF]
- GAR Precision 2536 [AMC-NHF]

CED	EXPECTED PROGENY DIFFERENCES						\$ VALUES	
	BW	WW	YW	MILK	MARB	RE	\$W	\$B
I+7	I+1.3	I+51	I+99	I+41	I+.65	I+.86	+32.29	+82.09

BIRTH WT.: 70 | ADJ. WNG. WT.: 763 / ET

Calving ease! ADJ. %IMF 5.57 / r 110 | ADJ. REA 15.8 / r 120

Top 1% Milk, RE, \$B; 15% YW, Marb, \$W.

Denver pen bull. Maternal brother sells as Lot 35.

77 PF Credence 9301 1104

CALVED: 2/15/11 | AAA: 16924480 | TATTOO: 1104

- #SS Objective T510 OT26 [AMF-CAF-XF]
- +SQ Credence 67S [AMF-CAF-XF]
- +Rita 3540 of 021 Rito 111 [AMF]
- #B/R New Design 036 [AMF-CAF-XF]
- +PF New Design 9301 [AMF]
- GAR Precision 2536 [AMC-NHF]
- #SS Traveler 6807 T510 [AMF-CAF-XF]
- SS Miss Rita R011 7R8 [AMF-NHF]
- +Rito 111 of 2536 Rito 616 [AMF-M1F-NHF]
- Rita 021 of 7R11 RDA [AMF]
- #VDAR New Trend 315 [AMF-CAF-XF]
- B/R Blackcap Empress 76
- #GAR Precision 1680 [AMC-NHC]
- +GAR EXT 2104

CED	EXPECTED PROGENY DIFFERENCES						\$ VALUES	
	BW	WW	YW	MILK	MARB	RE	\$W	\$B
	+1.8	+56	+95	+26			+31.82	

BIRTH WT.: NA | ADJ. WNG. WT.: 677

ADJ. %IMF NA | ADJ. REA NA

Top 15% WW, \$W.

78 PF Upward 486 1100

CALVED: 2/16/11 | AAA: +16919210 | TATTOO: 1100

- Connealy Onward [AMF-CAF-XF]
- Sitz Upward 307R [AMF-CAF-XF]
- Sitz Henrietta Pride 81M
- #BAR EXT Traveler 205 [AMF-CAF-XF]
- +BAAR USA Lady Jaye 486
- CRA Lady Jaye 608 498 S Easy
- #Connealy Lead On [AMF-CAF-XF]
- Altune of Conanga 6104
- #Sitz Value 7097 [AMF-CAF-XF]
- Sitz Henrietta Pride 1370
- #N Bar Emulation EXT [AMF-CAF-XF]
- #BAR Queen Traveler 3015
- #+GAR Sleep Easy 1009 [AMF-CAF-XF]
- HFF 917 Lady 975 498

CED	EXPECTED PROGENY DIFFERENCES						\$ VALUES	
	BW	WW	YW	MILK	MARB	RE	\$W	\$B
I+11	I+0.8	I+54	I+101	I+34	I+.40	I+.52	+35.68	+65.87

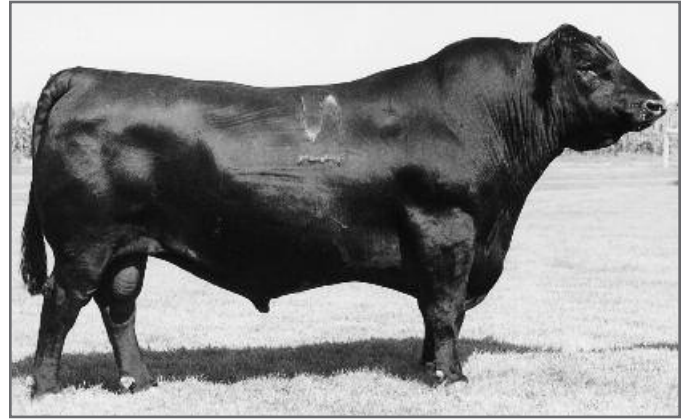
BIRTH WT.: 50 | ADJ. WNG. WT.: 656 / ET

Calving ease! ADJ. %IMF 3.91 | ADJ. REA 13.7 / r 104

Top 2% Milk; 4% \$W; 10% CED; 15% YW.

Maternal brothers sell as Lots 10, 20 and 37.

SPRING YEARLING BULLS



N Bar Emulation EXT His sons sell

79 PF EXT S309 1184

CALVED: 2/17/11 | AAA: +16937318 | TATTOO: 1184

- #Emulation N Bar 5522
- #N Bar Emulation EXT [AMF-CAF-XF]
- N Bar Primrose 2424
- #+Rito 112 of 2536 Rito 616 [AMF-CAF-XF]
- +Limestone Blackcap S309 [AMF-NHF]
- +GAR 044 Traveler 2328 [AMF-NHF]
- #Emulation 31 [DWF-RDF]
- Ankony 8F78 Lass 8F275
- #Emulation 31 [DWF-RDF]
- Primrose N Bar 9962
- #Rito 616 of 4B20 6807 [AMF-CAF-XF]
- GAR Precision 2536 [AMC-NHF]
- #GDAR Traveler 044 [AMF-CAF-XF]
- GAR Precision 2536 [AMC-NHF]

CED	EXPECTED PROGENY DIFFERENCES						\$ VALUES	
	BW	WW	YW	MILK	MARB	RE	\$W	\$B
I+5	I+2.1	I+49	I+86	I+21	I+.43	I+.31	+28.32	+58.32

BIRTH WT.: 82 | ADJ. WNG. WT.: 593 / ET

ADJ. %IMF 5.14 / r 122 | ADJ. REA 11.8 / r 104

Full brother sells as Lot 58.

80 PF CC&7 5382 1109

CALVED: 2/18/11 | AAA: +16924446 | TATTOO: 1109

- #+SAF Connection [AMF-CAF-XF]
- SydGen CC&7 [AMF-CAF-NHF]
- SydGen Forever Lady 4087 [AMF]
- #+Rito 112 of 2536 Rito 616 [AMF-CAF-XF]
- +SandPoint Rita 5382 [AMF]
- GAR Prime Time 2409 [AMF-NHF]
- #+SVF GDAR 216 LTD
- +SAF Royal Queen 5084 [CAF]
- SydGen 1407 Corona 2016 [AMC-CAF-XF]
- +SAF Forever Lady 8292
- #Rito 616 of 4B20 6807 [AMF-CAF-XF]
- GAR Precision 2536 [AMC-NHF]
- #Gardens Prime Time [AMF-CAF-XF]
- +GAR EXT 327 [AMF]

CED	EXPECTED PROGENY DIFFERENCES						\$ VALUES	
	BW	WW	YW	MILK	MARB	RE	\$W	\$B
I+6	I+1.1	I+55	I+100	I+40	I+.44	I+.39	+31.70	+67.49

BIRTH WT.: 80 | ADJ. WNG. WT.: 808 / ET

Calving ease!

ADJ. %IMF 4.97 | ADJ. REA 12.0

Top 1% Milk; 15% YW, \$W.

Maternal brothers sell as Lots 7, 14 and 19.

81 PF New Look 3143 1129 [NHF]

CALVED: 2/24/11 | AAA: +16950891 | TATTOO: 1129

- #Bon View New Design 1407 [AMF-CAF-XF]
- #+EXAR New Look 2971 [AMF-CAF-XF]
- N Bar Primrose 2424
- #Twin Valley Precision E161 [NHC-AMF-XF]
- +PF E161 Bardolena 3143 [NHC-AMF]
- GK Betsy Bardolena 323A
- #B/R New Design 036 [AMF-CAF-XF]
- Bon View Pride 664
- #Emulation 31 [DWF-RDF]
- Primrose N Bar 9962
- #GAR Precision 1680 [AMC-NHC]
- +WCC Blackcap C9 [RDC]
- Bardolene of Peak Dot 204R
- SPA Primeline Princess C401

CED	EXPECTED PROGENY DIFFERENCES						\$ VALUES	
	BW	WW	YW	MILK	MARB	RE	\$W	\$B
I+4	I+2.2	I+48	I+91	I+21	I+.43	I+.49	+23.50	+59.97

BIRTH WT.: 60 | ADJ. WNG. WT.: 728 / ET

ADJ. %IMF NA | ADJ. REA NA

Full brother sells as Lot 84.

SPRING YEARLING BULLS

ANGUS SELECTION TOOLS

82 PF Emblazon R0182 1140

CALVED: 2/27/11 | AAA: +16919115 | TATTOO: 1140

- #OCC Emblazon 854E [CAF-M1F] #DHD Traveler 6807 [AMF-M1F-NHF]
- +Rito 6EM3 of 4L1 Emblazon [AMF-CAF-XF] Dixie Erica of CH 1019
- +Rita 4L1 of 2536 208 [AMF-CAF-NHF] #Bon View New Design 208 [CAC-AMF-NHF]
- #Twin Valley Precision E161 [NHC-AMF-XF] #GAR Precision 1680 [AMC-NHC]
- +Three Trees Ever Lady R0182 [NHF] +WCC Blackcap C9 [RDC]
- +SAF Forever Lady 0182 #+SAF Neutron [AMF-CAF-XF]
- GDAR Forever Lady 246

CED	EXPECTED PROGENY DIFFERENCES						\$ VALUES	
	BW	WW	YW	MILK	MARB	RE	\$W	\$B
I+8	I+1.9	I+50	I+91	I+23	I+.34	I+.57	+27.51	+53.32

BIRTH WT.: 75 | ADJ. WNG. WT.: 751 / ET

ADJ. %IMF 5.40 | ADJ. REA 15.3

Top 15% RE.

Full brother sells as Lot 83.

83 PF Emblazon R0182 1141

CALVED: 2/27/11 | AAA: +16919127 | TATTOO: 1141

- #OCC Emblazon 854E [CAF-M1F] #DHD Traveler 6807 [AMF-M1F-NHF]
- +Rito 6EM3 of 4L1 Emblazon [AMF-CAF-XF] Dixie Erica of CH 1019
- +Rita 4L1 of 2536 208 [AMF-CAF-NHF] #Bon View New Design 208 [CAC-AMF-NHF]
- #Twin Valley Precision E161 [NHC-AMF-XF] #GAR Precision 1680 [AMC-NHC]
- +Three Trees Ever Lady R0182 [NHF] +WCC Blackcap C9 [RDC]
- +SAF Forever Lady 0182 #+SAF Neutron [AMF-CAF-XF]
- GDAR Forever Lady 246

CED	EXPECTED PROGENY DIFFERENCES						\$ VALUES	
	BW	WW	YW	MILK	MARB	RE	\$W	\$B
I+8	I+1.9	I+50	I+91	I+23	I+.34	I+.57	+27.51	+53.32

BIRTH WT.: 70 | ADJ. WNG. WT.: 588 / ET

ADJ. %IMF NA | ADJ. REA NA

Top 15% RE.

Full brother sells as Lot 82.



PF E161 Bardolena 3143 Dam of Lots 81 and 84

84 PF New Look 3143 1144 [NHF]

CALVED: 2/27/11 | AAA: +16950893 | TATTOO: 1144

- #Bon View New Design 1407 [AMF-CAF-XF] #B/R New Design 036 [AMF-CAF-XF]
- #+EXAR New Look 2971 [AMF-CAF-XF] Bon View Pride 664
- N Bar Primrose 2424 #Emulation 31 [DWF-RDF]
- #Twin Valley Precision E161 [NHC-AMF-XF] #GAR Precision 1680 [AMC-NHC]
- +PF E161 Bardolena 3143 [NHC-AMF] +WCC Blackcap C9 [RDC]
- GK Betsy Bardolena 323A Bardolene of Peak Dot 204R
- SPA Primeline Princess C401

CED	EXPECTED PROGENY DIFFERENCES						\$ VALUES	
	BW	WW	YW	MILK	MARB	RE	\$W	\$B
I+4	I+2.2	I+48	I+91	I+21	I+.43	I+.49	+23.50	+59.97

BIRTH WT.: 80 | ADJ. WNG. WT.: 704 / ET

ADJ. %IMF NA | ADJ. REA NA

Full brother sells as Lot 81.

WHAT ARE EPDs?

Expected Progeny Difference (EPD) is the estimate of how future progeny of each sire are expected to perform in each of the traits listed. Interim EPD may appear in cases wherein there is insufficient information to allow the calculation of an EPD through National Cattle Evaluation procedures. This EPD will be preceded by an "I" and appears throughout the catalog.

HOW YOU CAN USE EPDs

Each Angus bull listed in this catalog is compared to every other bull in the American Angus Association database. For example, bull A has a weaning EPD of +30 lbs. and bull B has a weaning EPD of +20 lbs. If you randomly mate these bulls in your herd, you could expect bull A's calves to weigh 10 lbs. more at weaning than bull B's progeny (30 - 20 = 10).

PRODUCTION EPDs

Calving Ease Direct (CED), is expressed as a difference in percentage of unassisted births, with a higher value indicating greater calving ease in first-calf heifers. It predicts the average difference in ease with which a sire's calves will be born when he is bred to first-calf heifers.

Birth Weight (BW), expressed in pounds, is a predictor of a sire's ability to transmit birth weight to his progeny, compared to the progeny of an average Angus bull.

Weaning Weight Direct (WW), expressed in pounds, is a predictor of a sire's ability to transmit weaning growth to his progeny, compared to the progeny of an average bull in the Angus breed.

Yearling Weight (YW), expressed in pounds, is a predictor of a sire's ability to transmit yearling weight, compared to the progeny of an average sire in the Angus breed.

Weaning Weight Maternal (Milk) is a predictor of a sire's genetic merit for milk and mothering ability as expressed in his daughters. In other words, it is that part of weaning weight attributed to milk and mothering ability. It is compared to daughters of an average bull in the Angus breed.

CARCASS EPDs

Angus Carcass EPDs are calculated from an integrated analysis of the Angus Herd Improvement Records (AHIR®) carcass and ultrasound phenotypic databases. The genetic evaluation produces a single set of EPDs for carcass weight, marbling score, ribeye area and fat thickness. The units of measure are in carcass trait format and analyzed on an age-constant basis. Marbling and Ribeye Area EPDs are included in this catalog.

Marbling EPD (Marb) is a prediction of differences in future progeny performance relative to carcass marbling score. Marbling score is the primary component of the USDA beef quality grading system. Selection pressure to improve the average marbling score would be expected to improve quality grade. Improvement in marbling score could qualify carcasses for acceptance into the Certified Angus Beef® (CAB®) brand, provided other CAB specifications are met.

Ribeye Area EPD (RE), expressed in square inches, is a predictor of the difference in ribeye area of a sire's progeny compared to progeny of other sires.

ANGUS \$VALUES

\$Value indexes are multi-trait selection indexes, expressed in dollars per head, to assist beef producers by adding simplicity to genetic selection decisions. A \$Value has meaning only when used in comparison to the \$Value of another animal. For example, just as with EPDs, variation in \$Values between animals indicates average expected differences in the relative value of progeny if random mating is assumed and the calves are exposed to the same environment. Weaned Calf and Beef \$Values are included in this catalog.

Weaned Calf Value (\$W): expressed in dollars per head, is the expected average difference in future progeny performance for preweaning merit. \$W includes both revenue and cost adjustments associated with differences in birth weight, weaning direct growth, maternal milk and mature cow size.

Beef Value (\$B): expressed in dollars per head, is the expected average difference in future progeny performance for postweaning and carcass value compared to progeny of other sires.

For additional information, log on to: www.angus.org

SPRING YEARLING BULLS

SPRING YEARLING BULLS

SPRING YEARLING HEREFORD BULLS

Lots 85-88

85 | PF Progress W901 Y102

CALVED: 1/20/11 | AHA: P43201936 | TATTOO: Y102

Feltons Legend 242 (SOD,CHB)
SHF Progress P20 (CHB)
SHF Intrstate D03 G06 ET

Feltons Domino 774 (SOD,CHB)
Feltons G15
SHF Interstate 20X D03 (SOD,CHB)
MM Cisco Lady 203 (DOD)

CS Boomer 29F (CHB,SOD)
PF 29F Geisha W901 ET
BR DM Geisha ET

Remitall Boomer 46B (SOD,CHB)
CS Miss 1st Flag 21A (DOD)
Remitall Online 122L (SOD,CHB)
HH Miss Adv 786G 1ET

EXPECTED PROGENY DIFFERENCES							INDEXES				
CED	BW	WW	YW	MILK	MARB	RE	BMI	CEZ	BII	CHB	
+5.2	+3.2	+55	+89	+24	+23	+31	+20	+19	+15	+31	

BIRTH WT.: 68
Top 10% WW; 15% YW, Milk.

86 | PF Sooner 6195 Y104

CALVED: 1/19/11 | AHA: P43203579 | TATTOO: Y104

NJW 1Y Wrangler 19D (CHB,SOD)
STAR Red Hills MCS Sooner 59N
STAR KKH MKS Bethany Key 148L

Circle-D Wrangler 832W (SOD,CHB)
NJW Frosty 1Y
CS Boomer 29F (CHB,SOD)
Keekee

TRM 5401 Patriot 2175 (CHB)
TRM 3163 Pattie 6195
DH Miss Advance 3163

RRH Mr Felt 3008 (SOD,CHB)
8020 Domette MR 5401 (DOD)
DH Advance 1008 1ET (CHB)
DH Dominette 956

EXPECTED PROGENY DIFFERENCES							INDEXES				
CED	BW	WW	YW	MILK	MARB	RE	BMI	CEZ	BII	CHB	
+2.3	+3.2	+46	+77	+20	+10	+39	+20	+17	+18	+25	

BIRTH WT.: 67



87 | PF Progress W914 Y106

CALVED: 2/4/11 | AHA: 43201933 | TATTOO: Y106

Feltons Legend 242 (SOD,CHB)
SHF Progress P20 (CHB)
SHF Intrstate D03 G06 ET

Feltons Domino 774 (SOD,CHB)
Feltons G15
SHF Interstate 20X D03 (SOD,CHB)
MM Cisco Lady 203 (DOD)

Remitall Online 122L (SOD,CHB)
PF Rachael W914
HH Miss Adv 786G 1ET

Remitall Embracer 8E (SOD,CHB)
Remitall Catalina 24H
CL 1 Domino 500E (SOD)
HH Miss Advance 251B

EXPECTED PROGENY DIFFERENCES							INDEXES				
CED	BW	WW	YW	MILK	MARB	RE	BMI	CEZ	BII	CHB	
+7.8	-0.8	+46	+73	+22	+29	+27	+24	+23	+20	+28	

Calving ease!

BIRTH WT.: 50
Top 3% BW.

88 | PF 14W W910 Y108

CALVED: 3/1/11 | AHA: P43198952 | TATTOO: Y108

KCF Bennett 3008 M326 (CHB)
Loewen M326 14W
HVH Queen N12 9S

RRH Mr Felt 3008 (SOD,CHB)
KCF Miss 459 F284
SHF Progress P20 (CHB)
HVH Susie 54E N12 ET

Remitall Online 122L (SOD,CHB)
PF Rachael W910
HH Miss Adv 786G 1ET

Remitall Embracer 8E (SOD,CHB)
Remitall Catalina 24H
CL 1 Domino 500E (SOD)
HH Miss Advance 251B

EXPECTED PROGENY DIFFERENCES							INDEXES				
CED	BW	WW	YW	MILK	MARB	RE	BMI	CEZ	BII	CHB	
+4.2	+2.0	+54	+86	+19	+21	+51	+26	+21	+22	+30	

BIRTH WT.: 58
Top 15% WW.

Can't make the sale?



We've gotcha covered!

Real-time bidding for this sale is available via the internet. Live audio and live video will allow registered buyers to bid on animals just as if you were present at the sale. A buyer account must be created prior to the sale. To create an account, please visit: <http://www.LiveAuctions.tv> and request a buyer number. Instructions are available to walk you through the account set up process. If you cannot attend the sale, please use LiveAuctions.tv. Buyers who would like to bid via the internet must register with LiveAuctions.tv two days prior to the sale. If you have questions, e-mail: brad@LiveAuctions.tv

COMMERCIAL FEMALES

The Lot 100s

Sale Notes



105

SPRING-CALVING FIRST-CALF HEIFERS

Over half with calves at side by sale time.
Bred to low birth weight Angus bulls.

30

MATURE PUREBRED ANGUS COWS

(Selling without registration certificates.)

15 Spring Calvers

...A.I. bred to Connealy Consensus and Hoover Dam

15 Fall Calvers

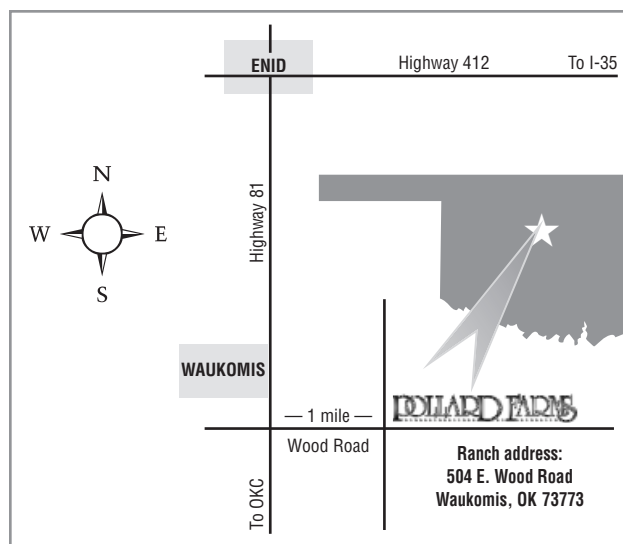
...A.I. bred to Basin Mission Complete 003X

All commercial females will sell in uniform groups.

**Please mark your calendar
and plan to join us for our
Annual Female Production Sale
...Sunday, August 26, 2012!**

Thank you!

*We appreciate your interest
and support.*



*Pictured on back cover:
Pollard Farms' 2012 National Western Stock Show
Champion Pen of Yearling Bulls*



FIRST CLASS MAIL: PLEASE DO NOT DELAY

FIRST CLASS
U.S. POSTAGE
PAID
PERMIT NO. 6
ELGIN, OK
73538

Pattard Farms 13th Annual Bull & Commercial Female Sale
Saturday, February 25th... Muskogee, Oklahoma